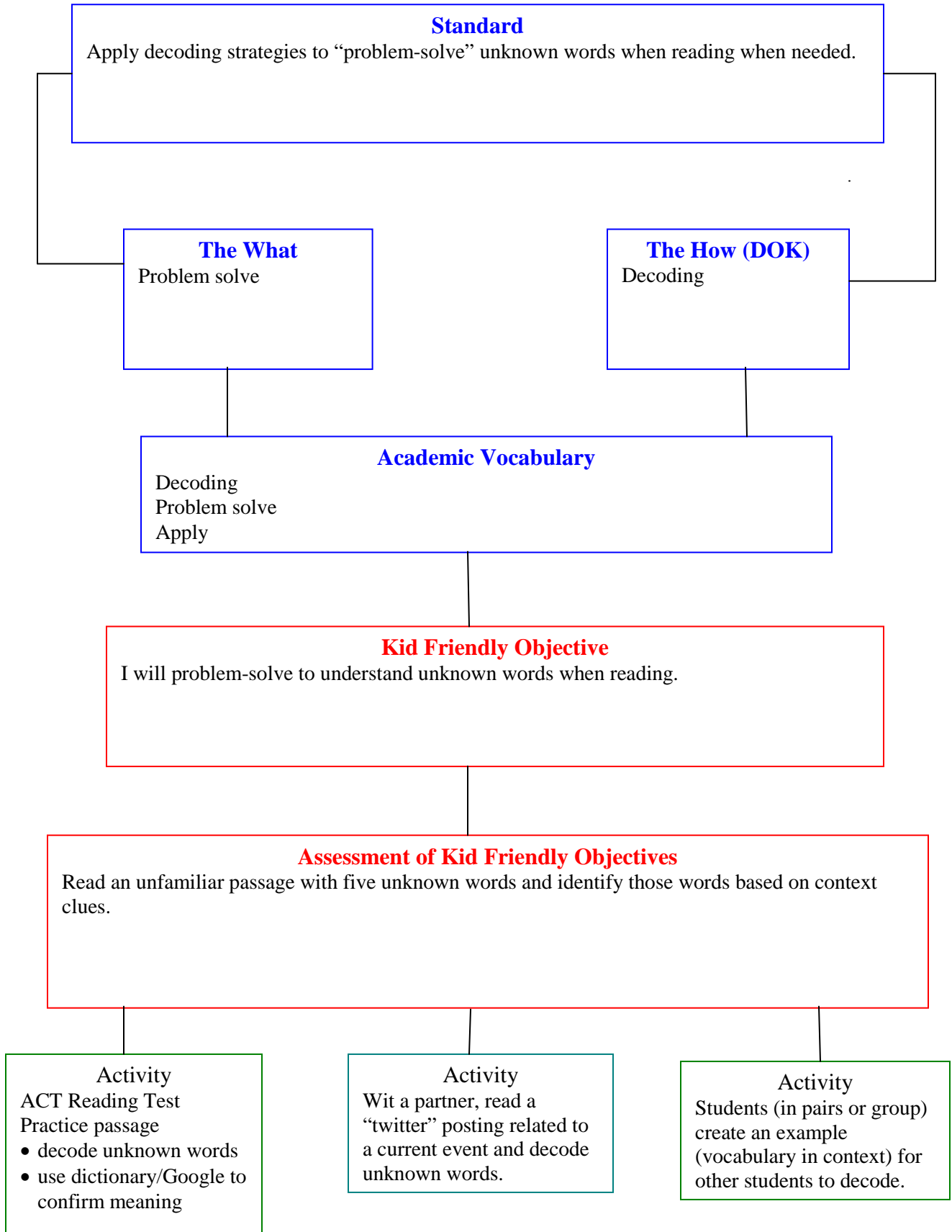


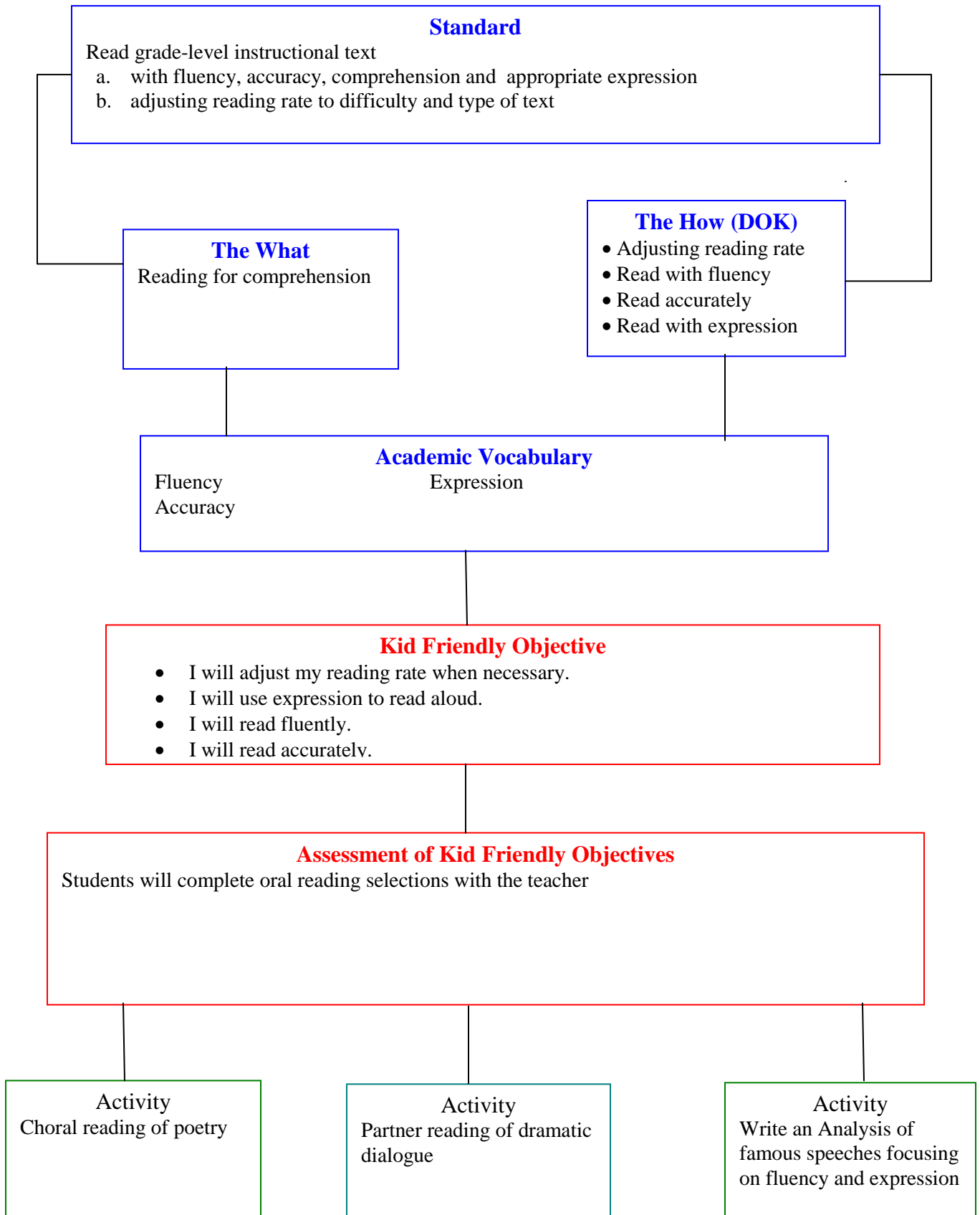
INSTRUCTIONAL DESIGN FRAMEWORK

R1C



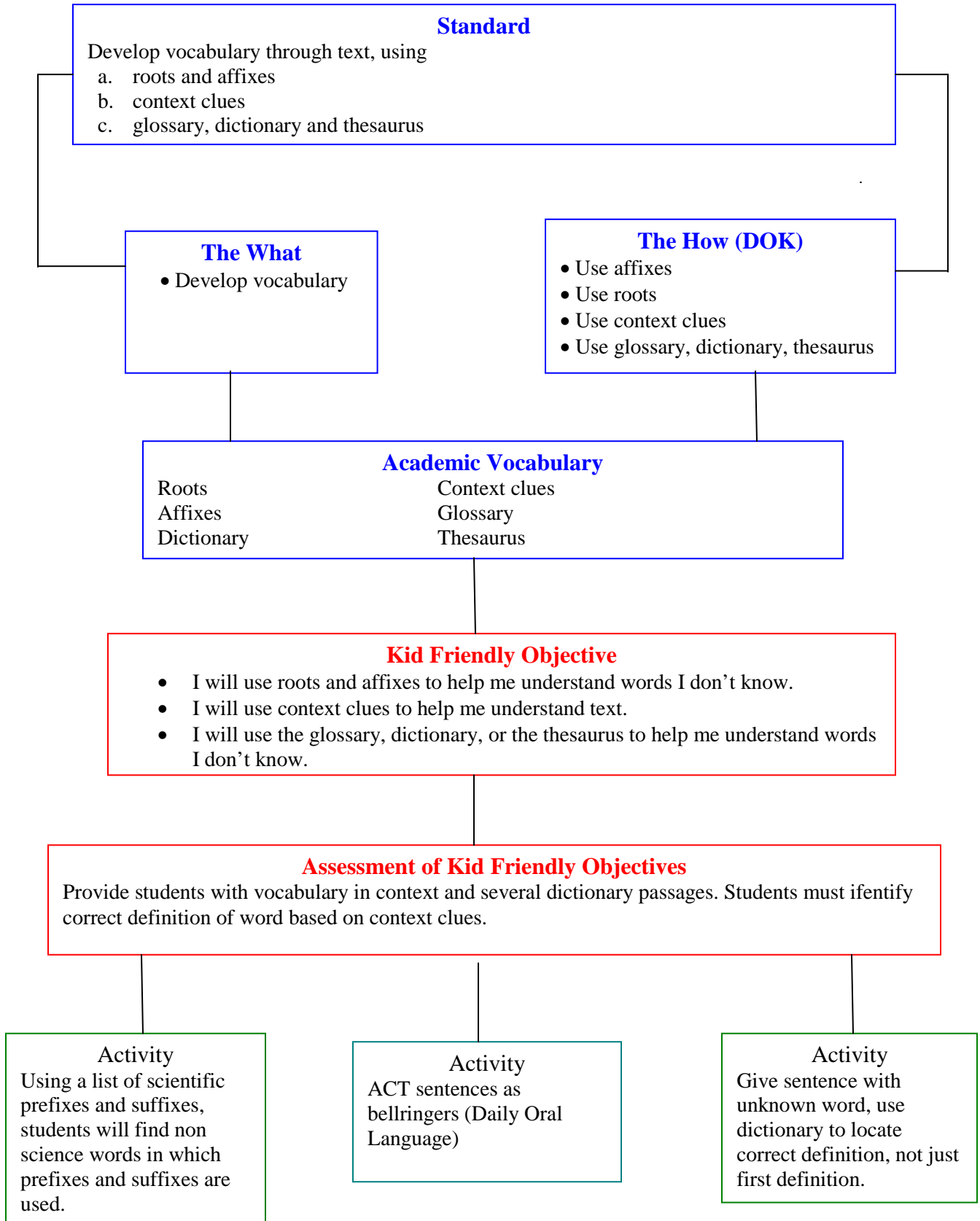
INSTRUCTIONAL DESIGN FRAMEWORK

R1D



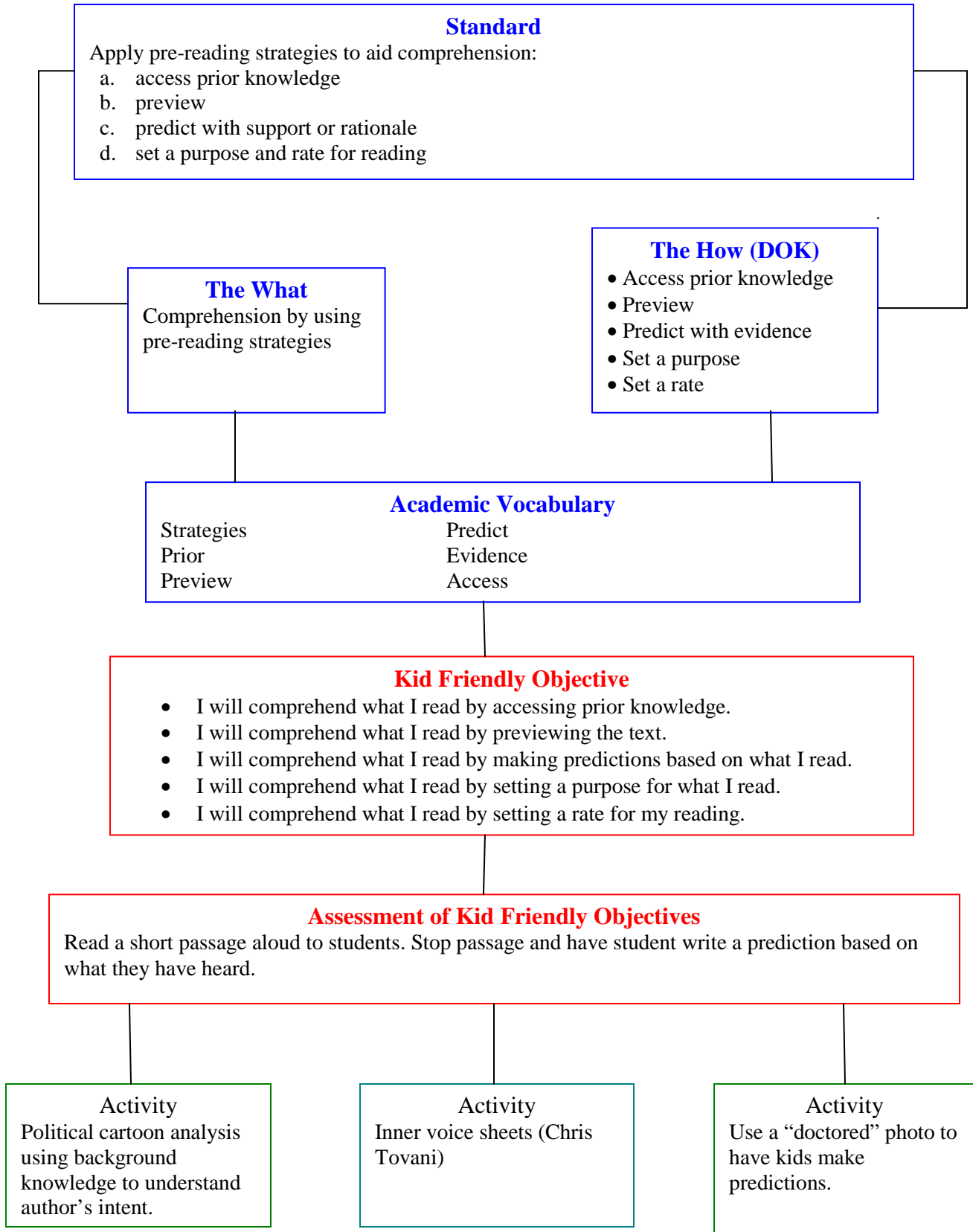
INSTRUCTIONAL DESIGN FRAMEWORK

R1E



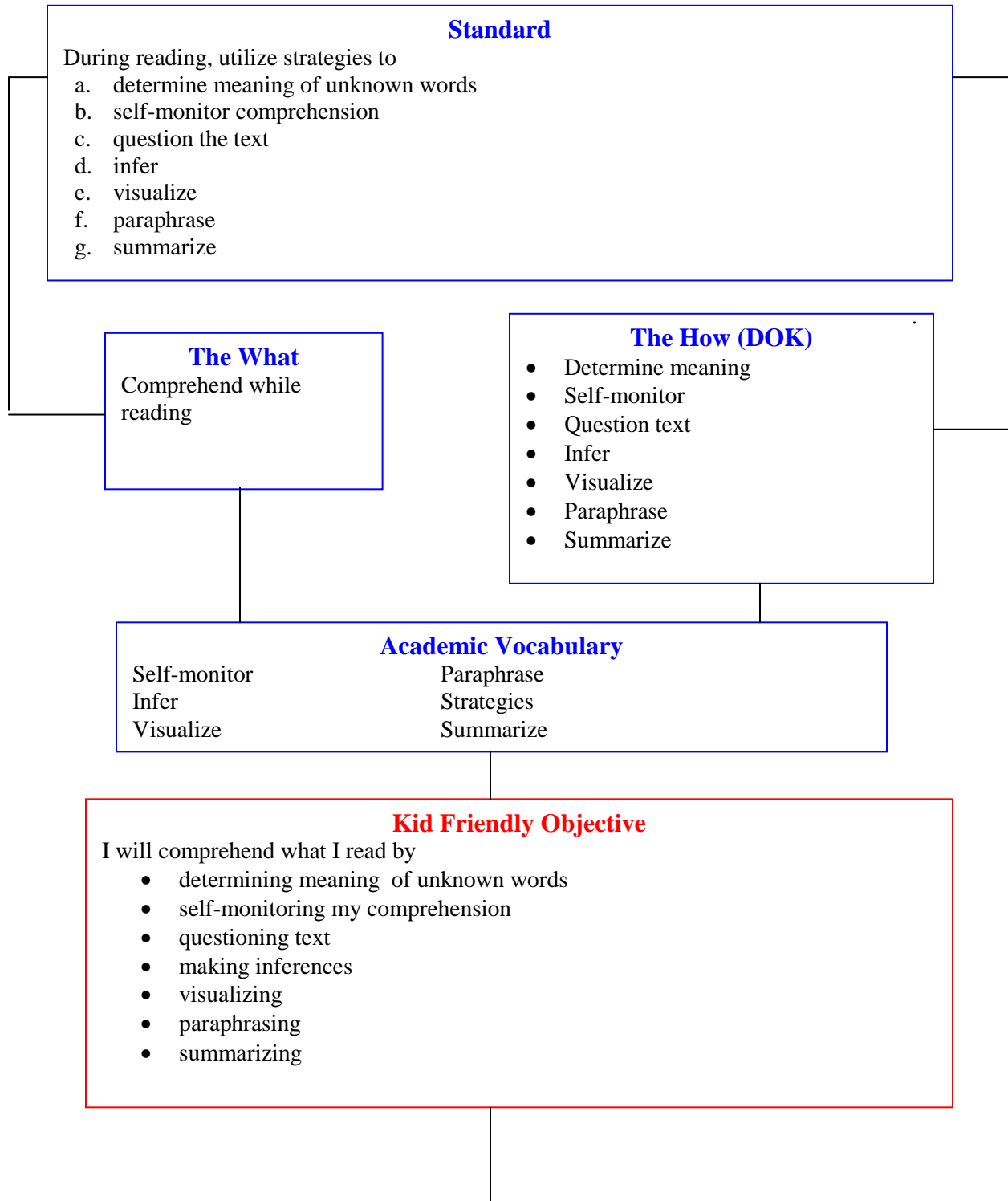
INSTRUCTIONAL DESIGN FRAMEWORK

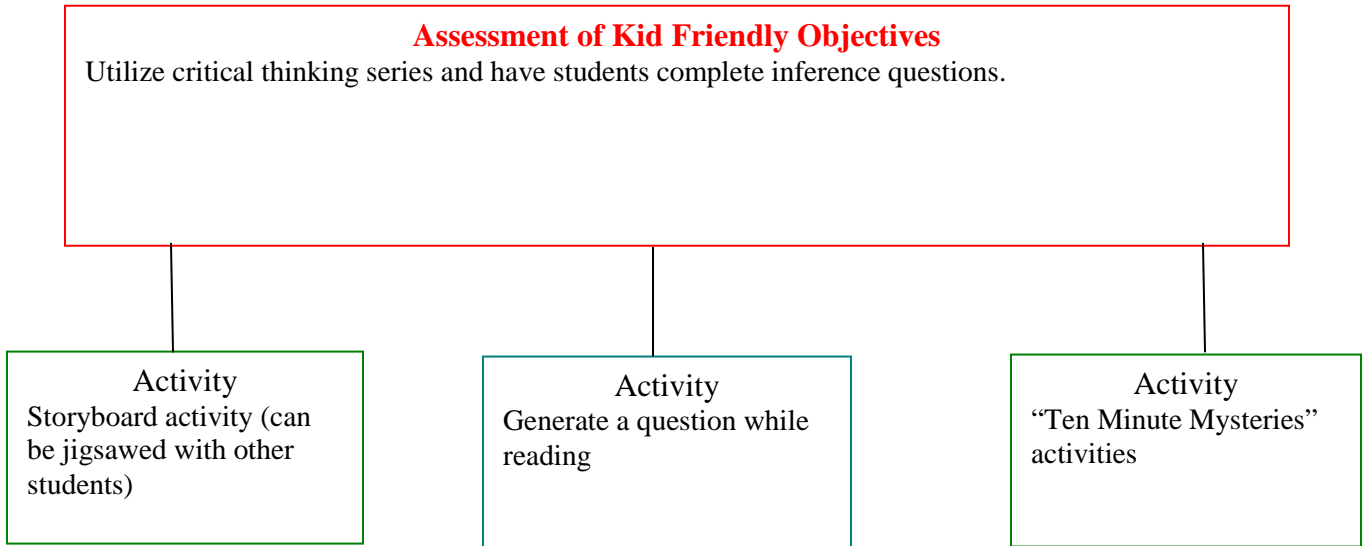
R1F



INSTRUCTIONAL DESIGN FRAMEWORK

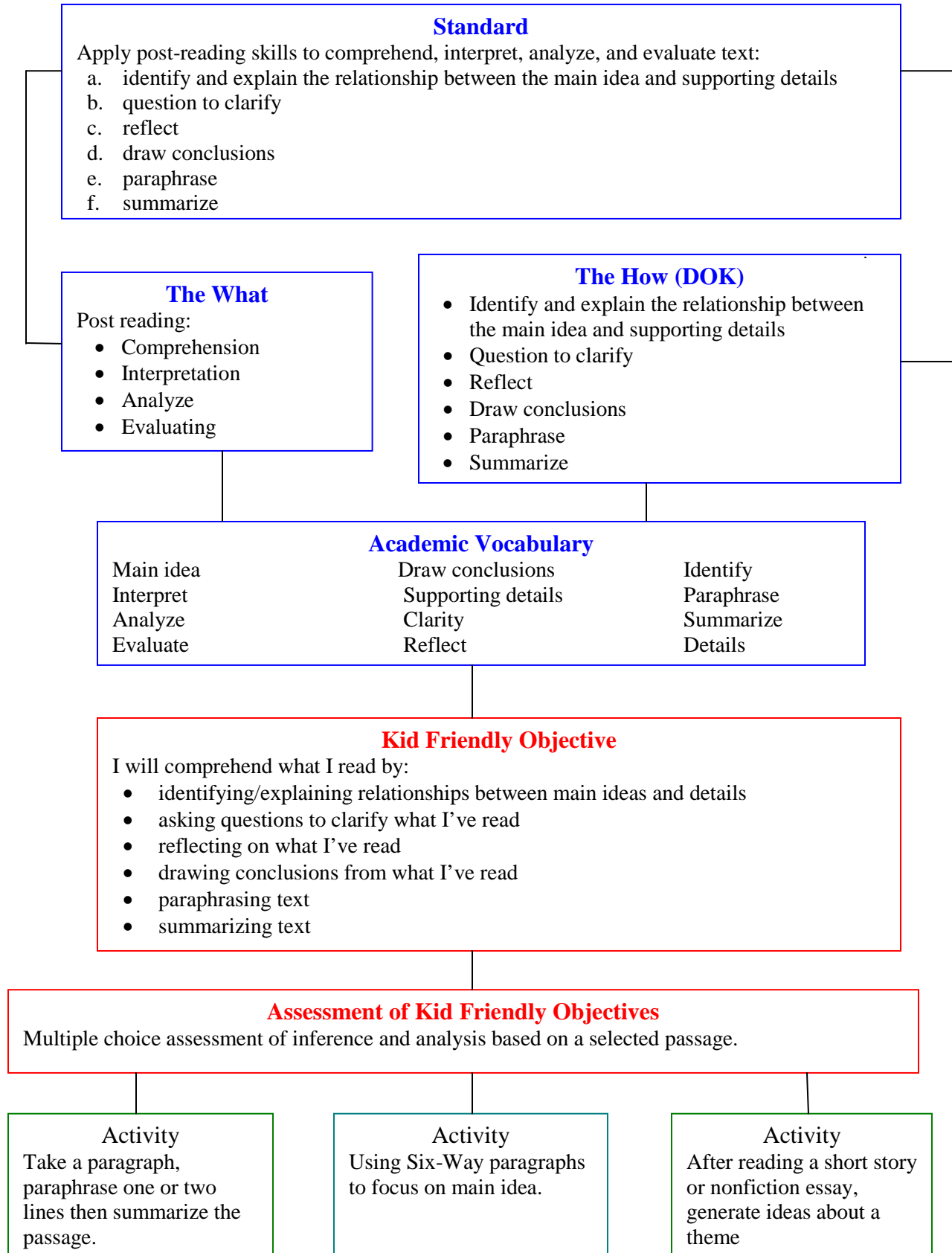
R1G





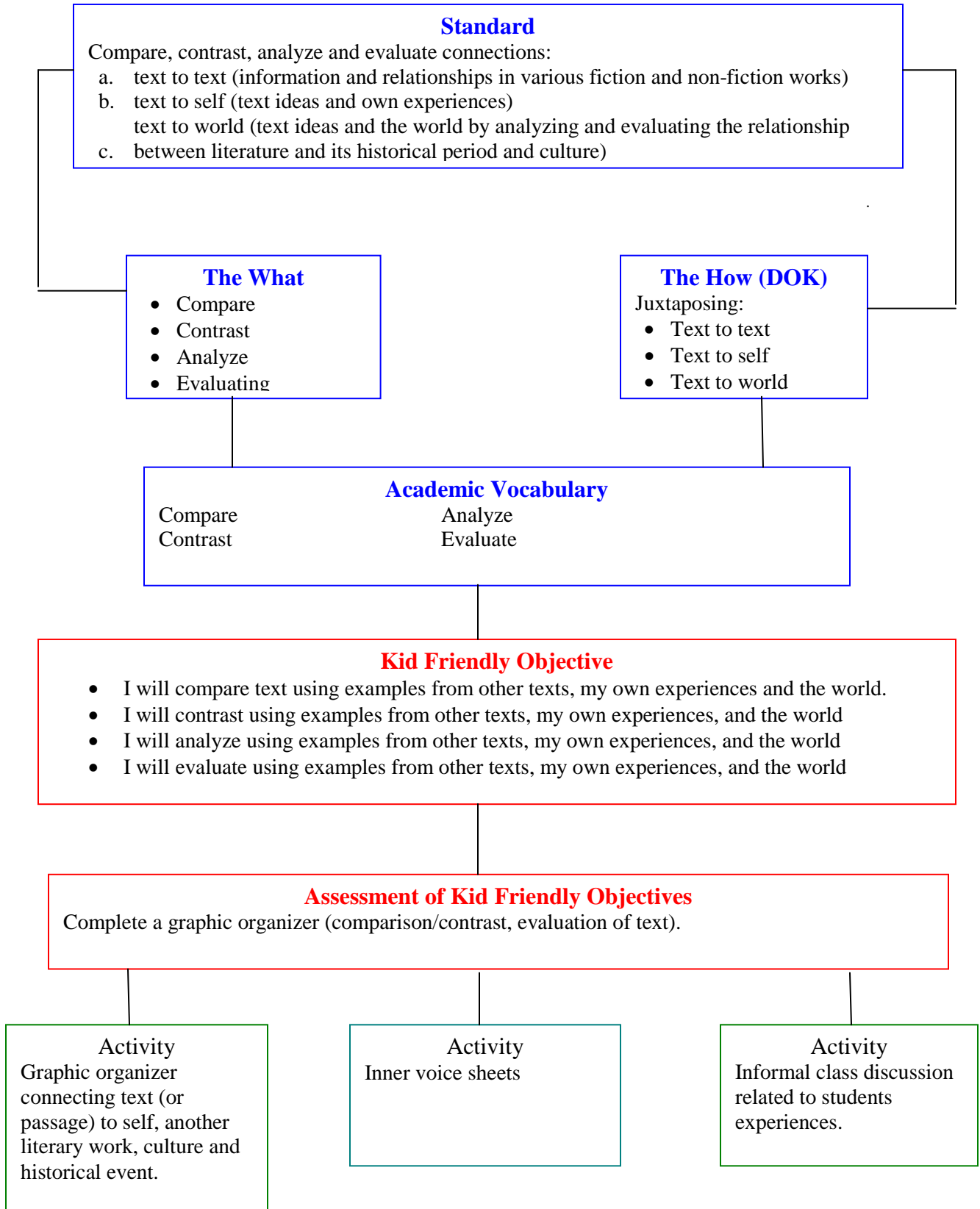
INSTRUCTIONAL DESIGN FRAMEWORK

R1H



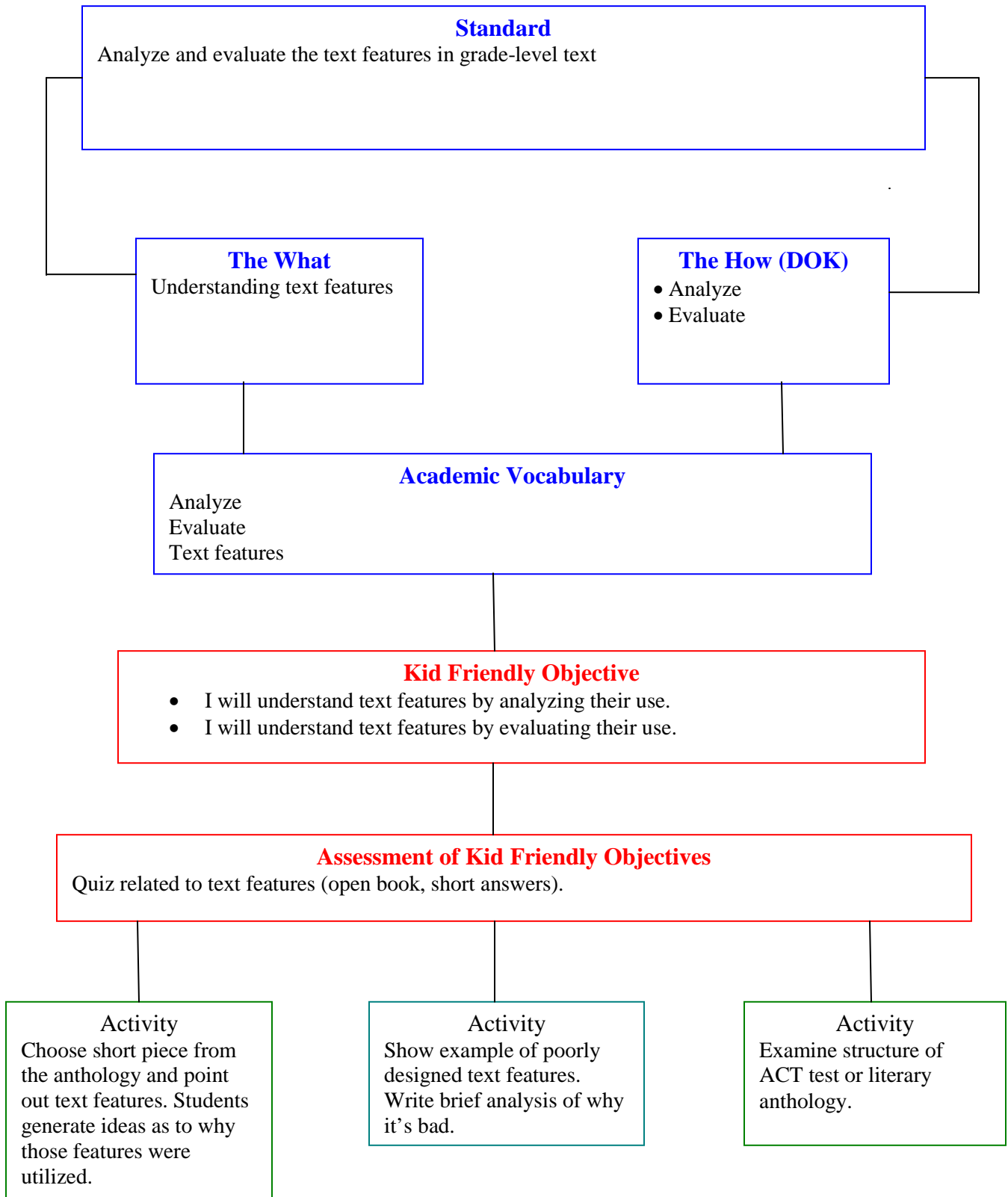
INSTRUCTIONAL DESIGN FRAMEWORK

R11



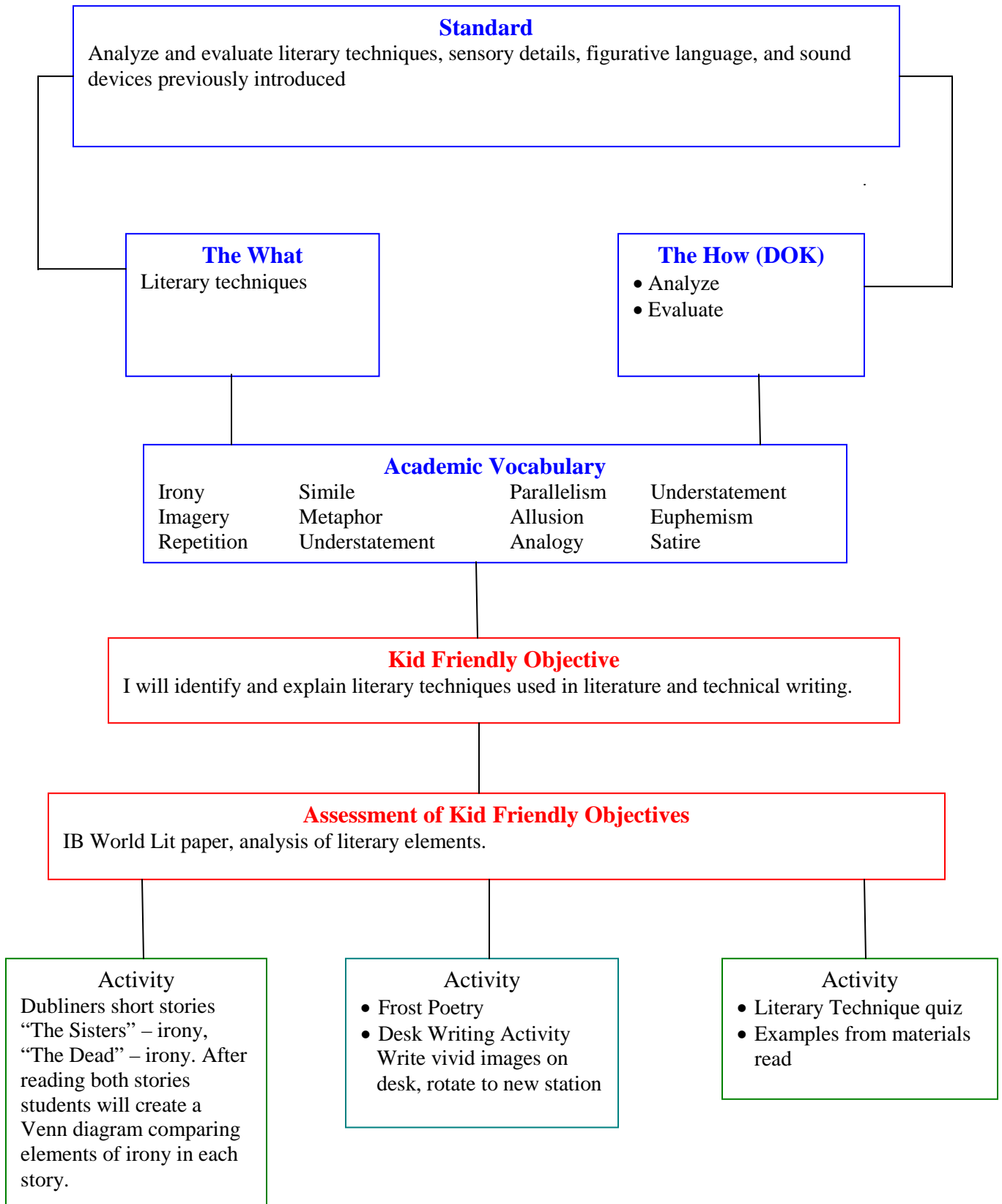
INSTRUCTIONAL DESIGN FRAMEWORK

R2A



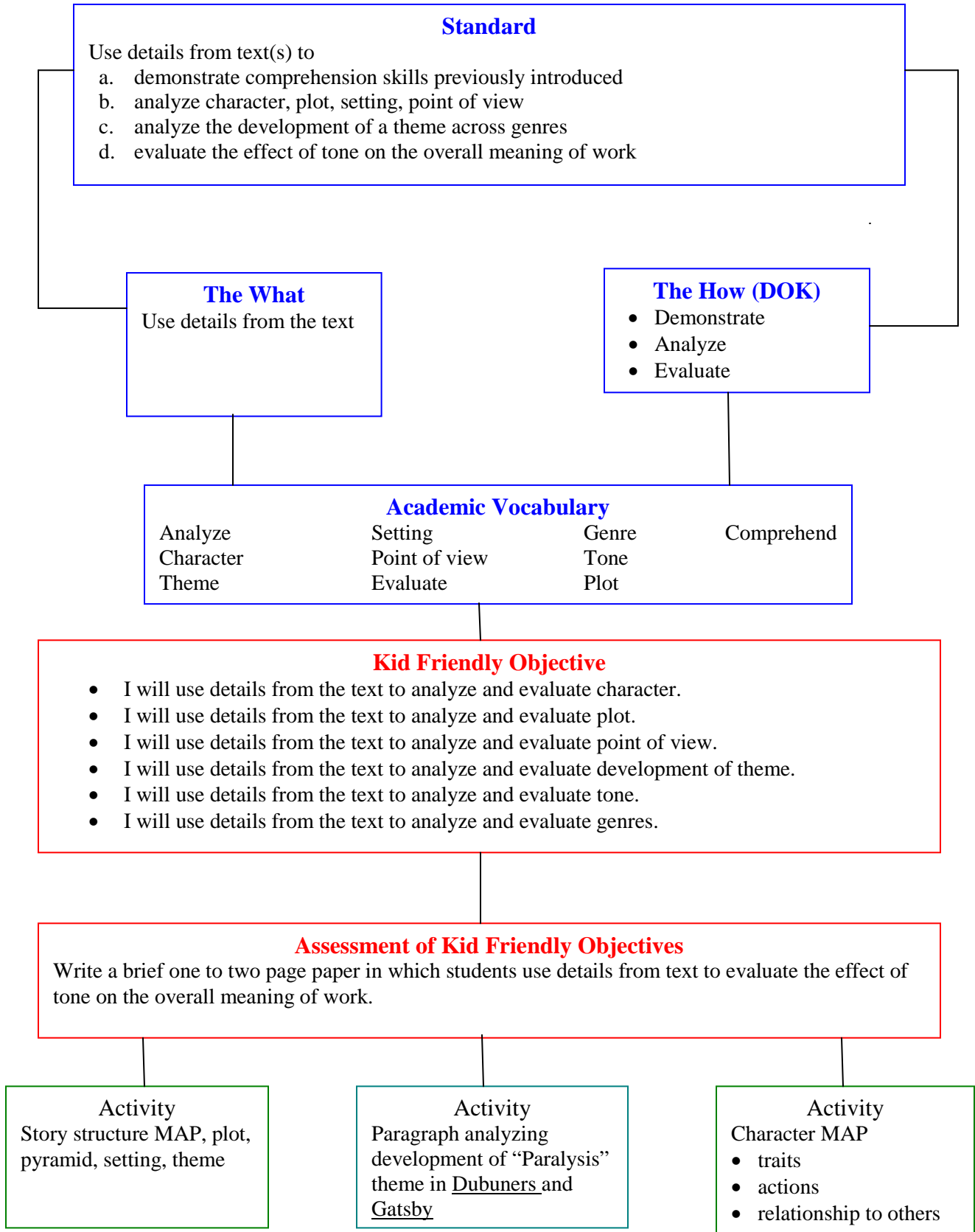
INSTRUCTIONAL DESIGN FRAMEWORK

R2B



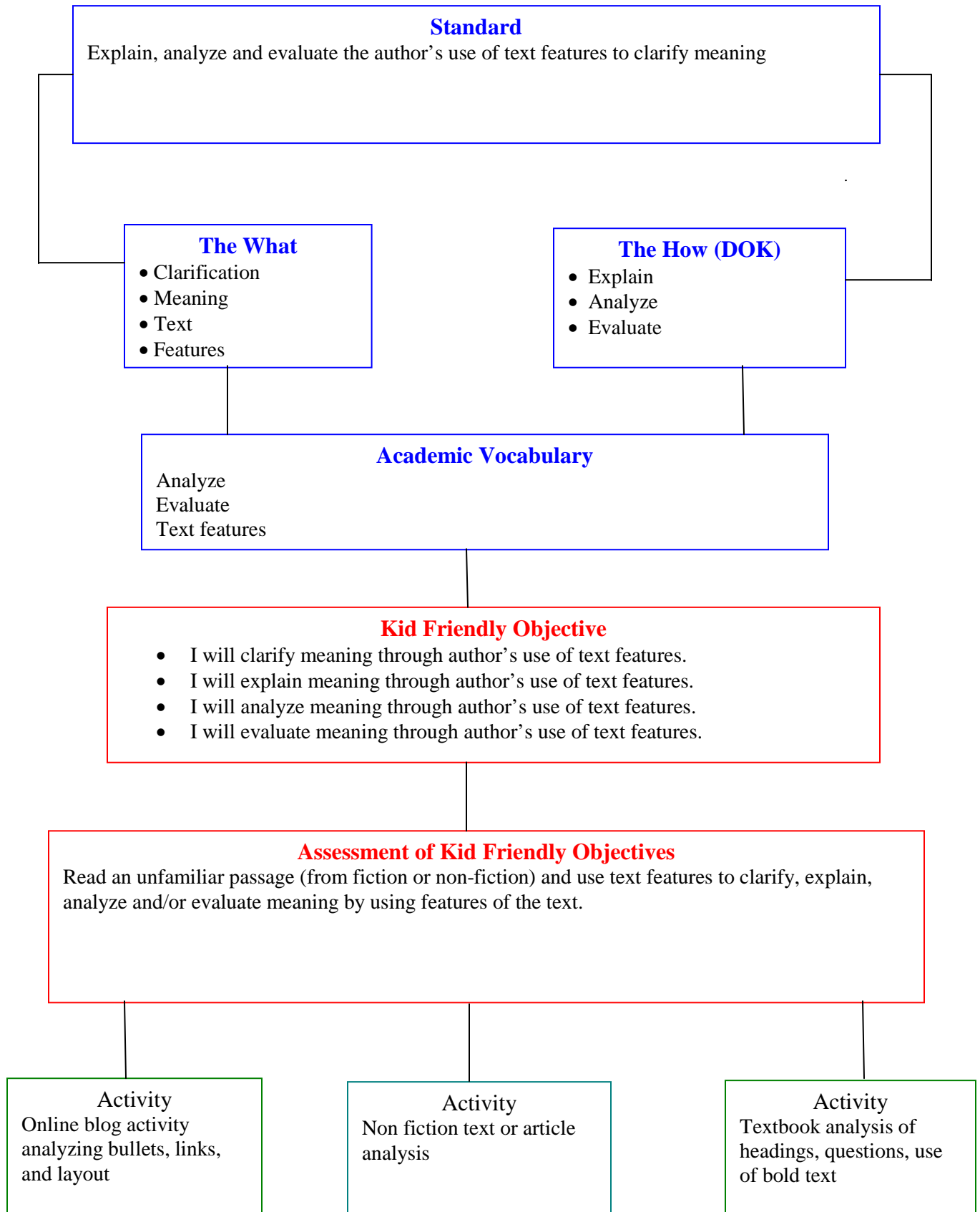
INSTRUCTIONAL DESIGN FRAMEWORK

R2C



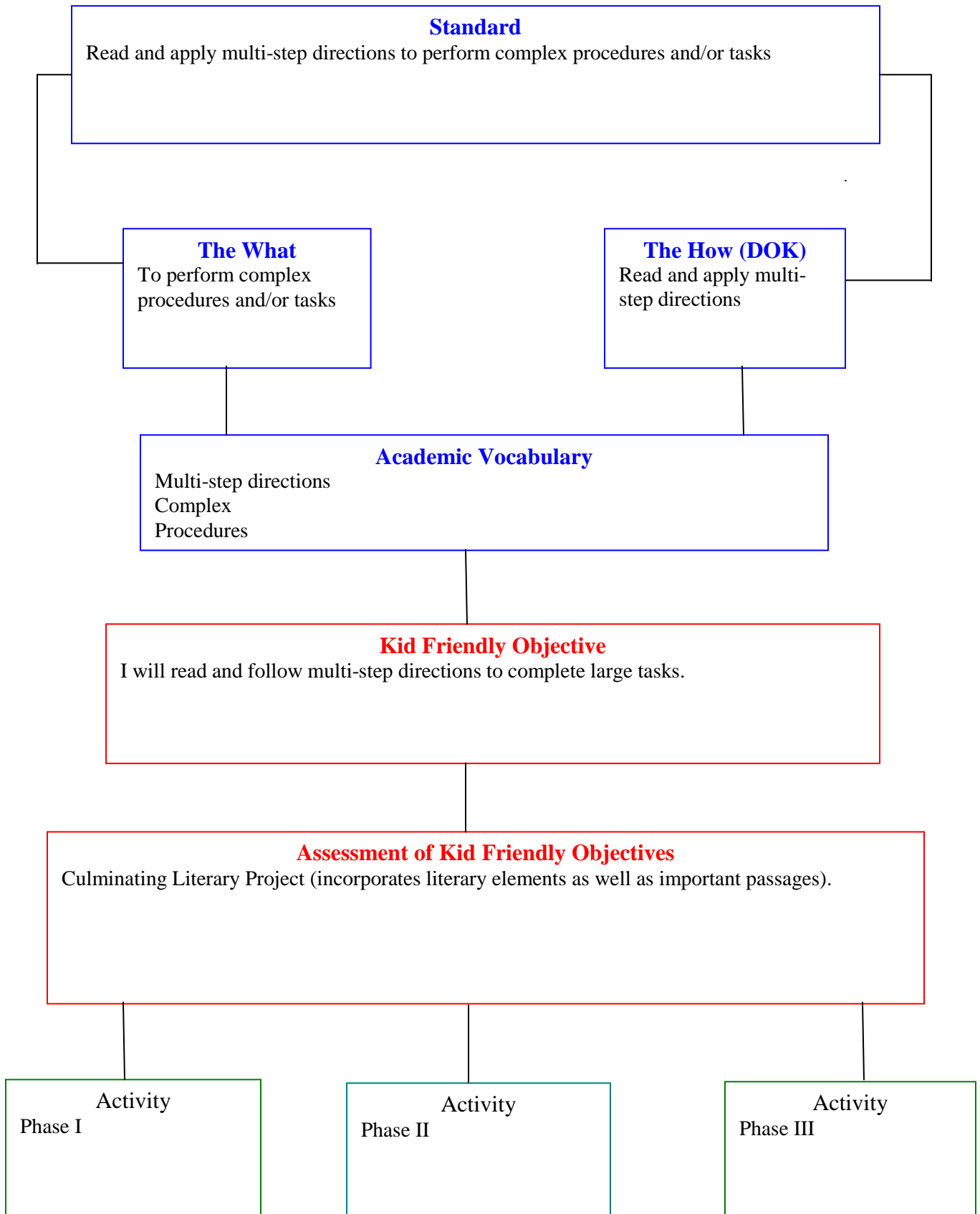
INSTRUCTIONAL DESIGN FRAMEWORK

R3A



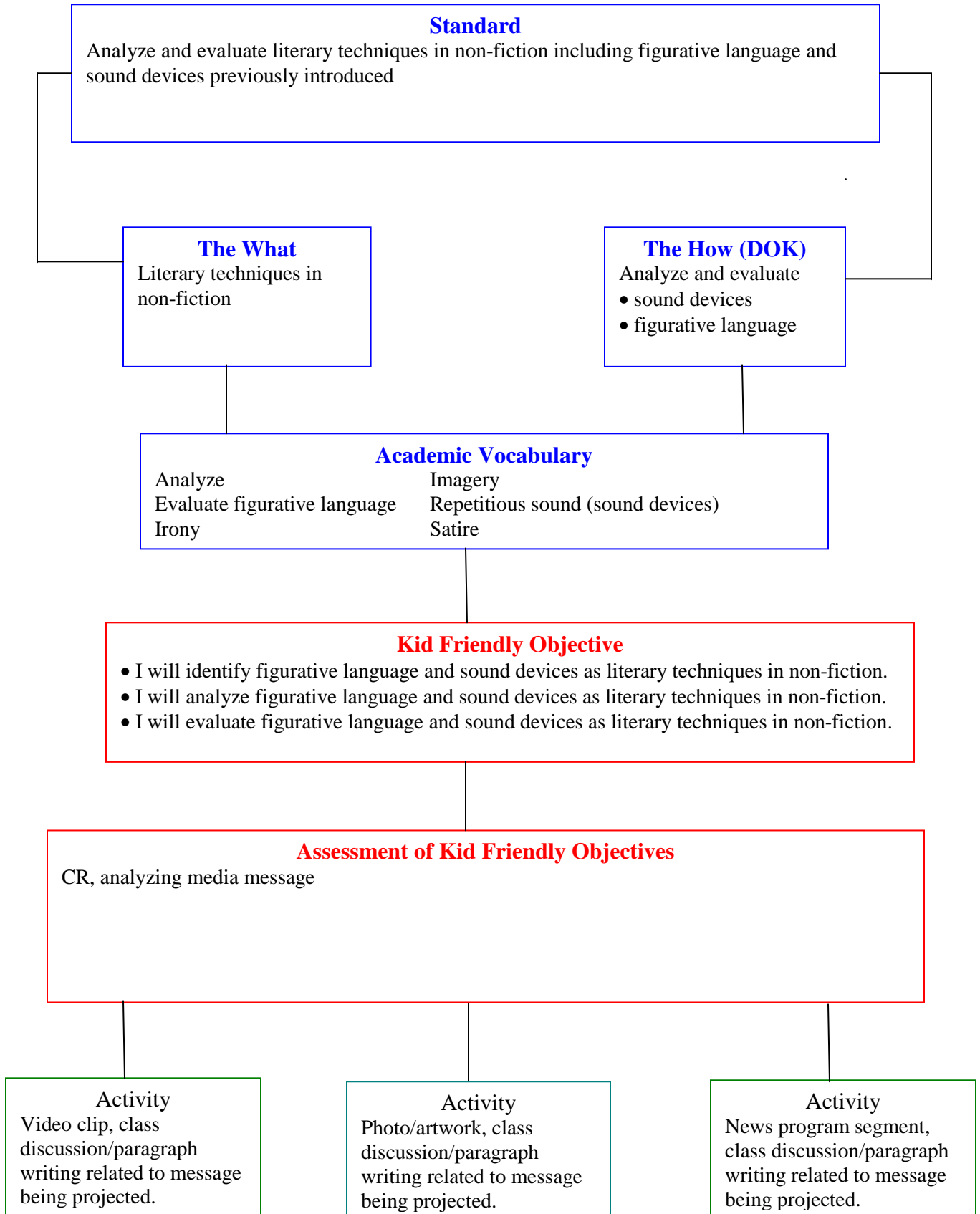
INSTRUCTIONAL DESIGN FRAMEWORK

R3D



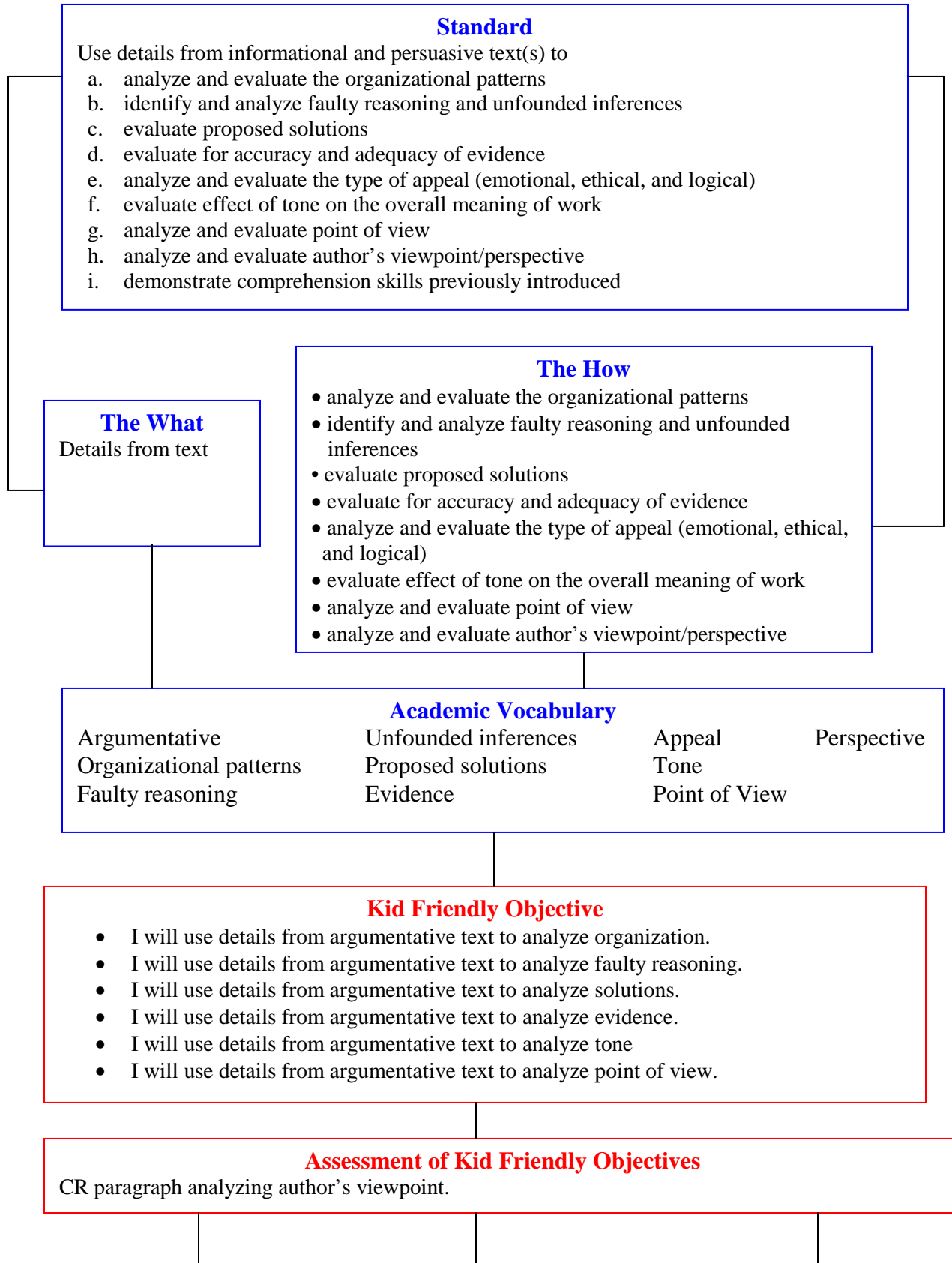
INSTRUCTIONAL DESIGN FRAMEWORK

R3B



INSTRUCTIONAL DESIGN FRAMEWORK

R3C



Activity

In groups, evaluate solutions proposed for a global or national problem.

Activity

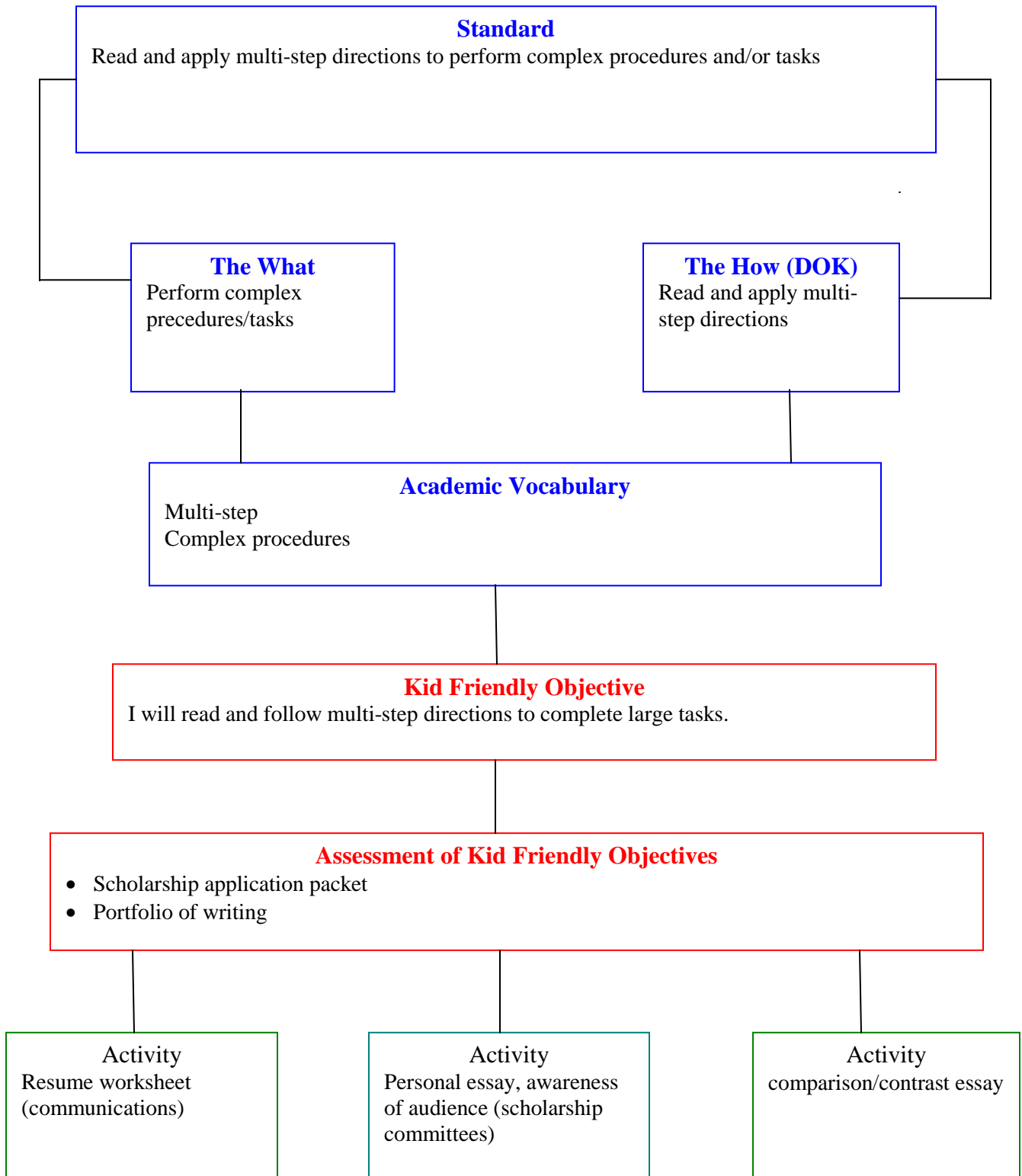
Analyze magazine ad for types of appeal (emotional, ethical, and logical)

Activity

CR, evaluating tone on overall meaning of work

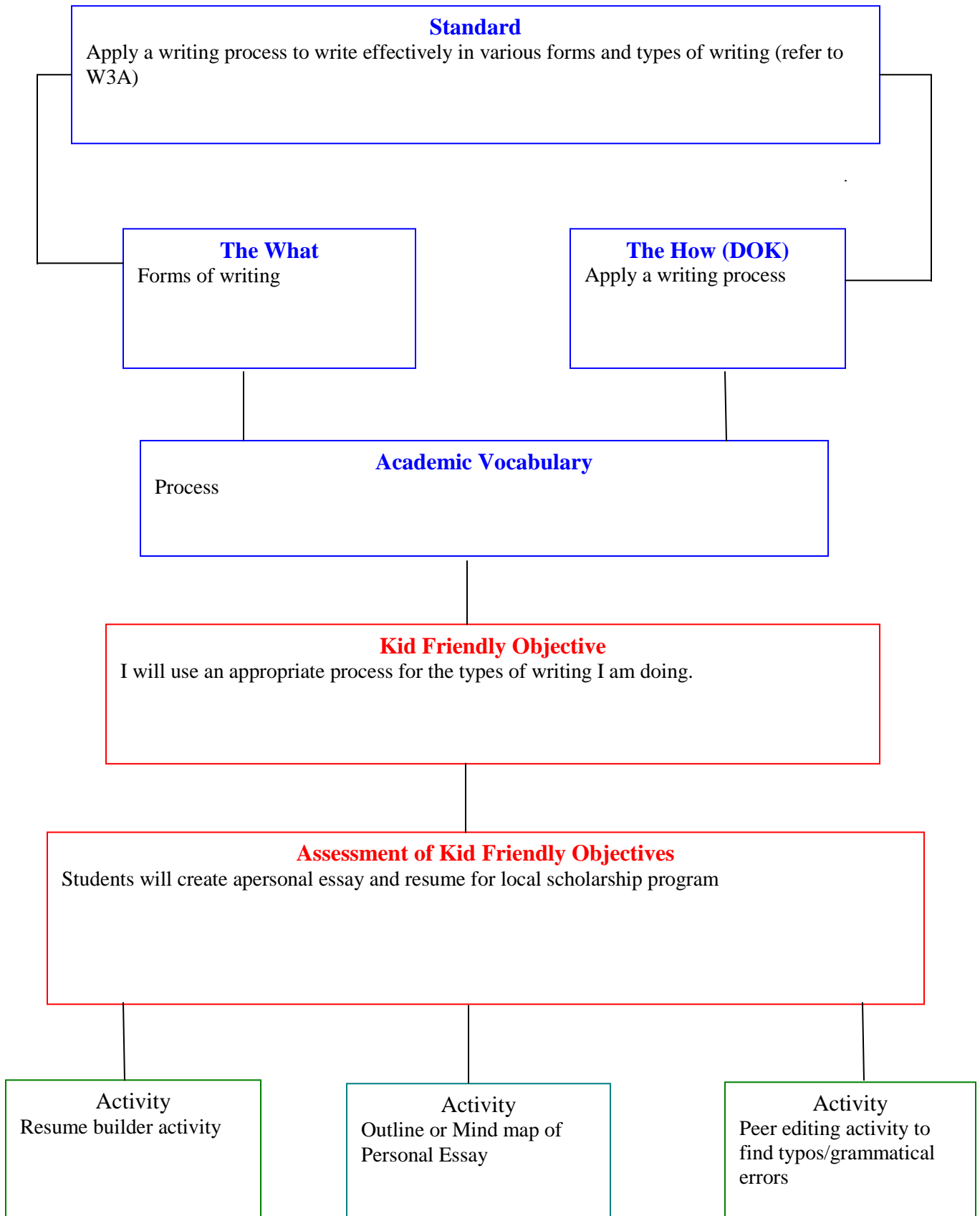
INSTRUCTIONAL DESIGN FRAMEWORK

R3D



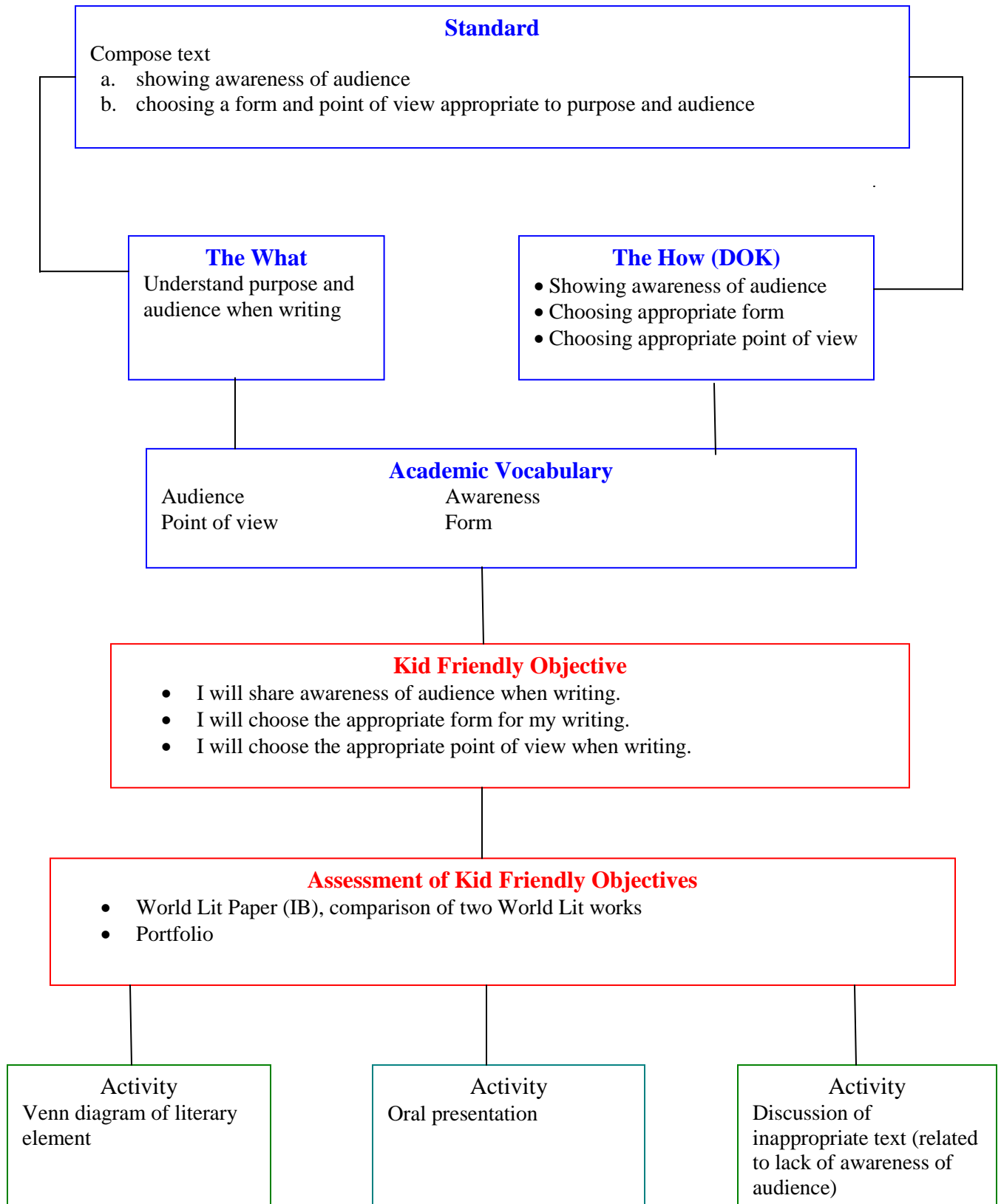
INSTRUCTIONAL DESIGN FRAMEWORK

W1A

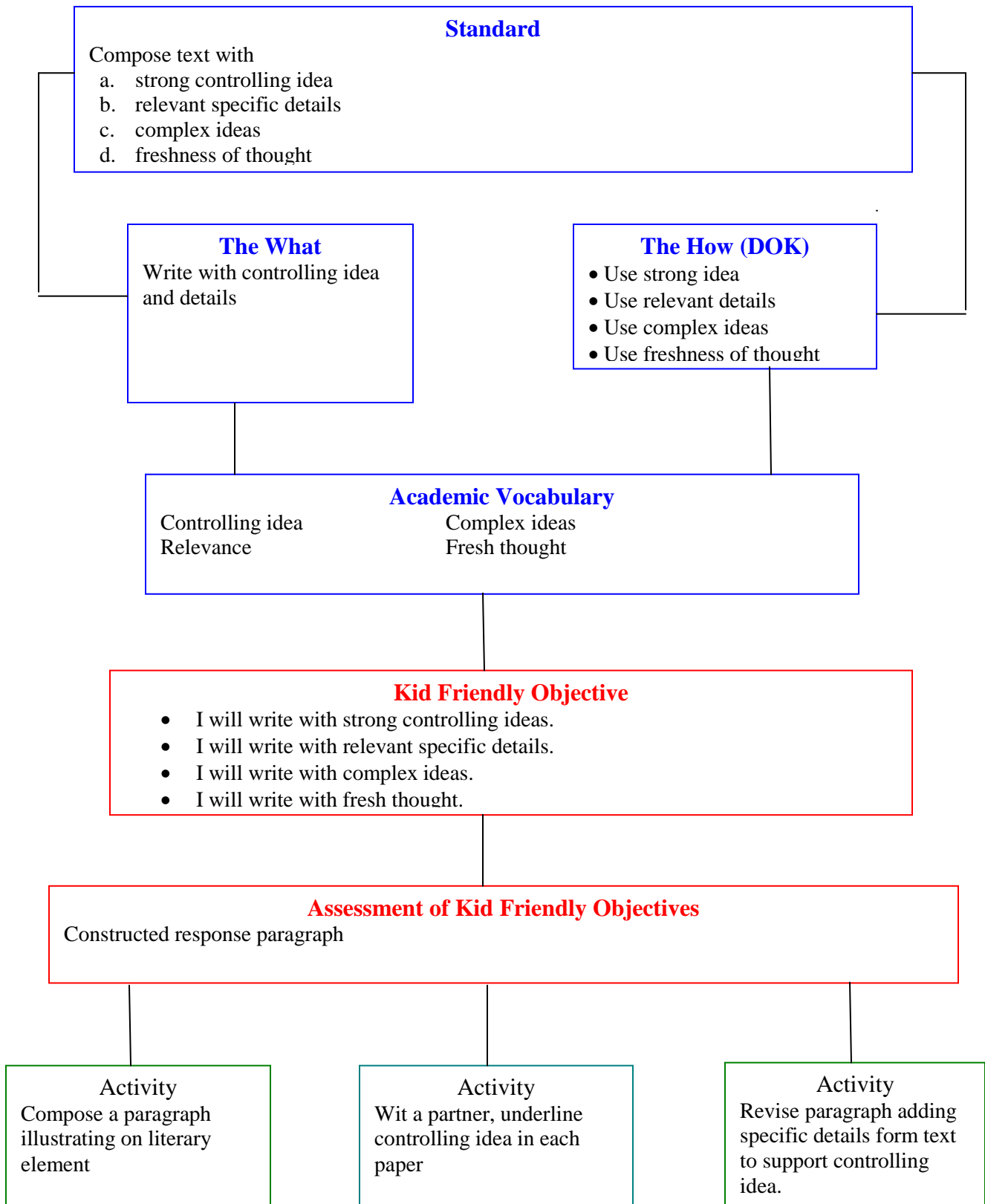


INSTRUCTIONAL DESIGN FRAMEWORK

W2A

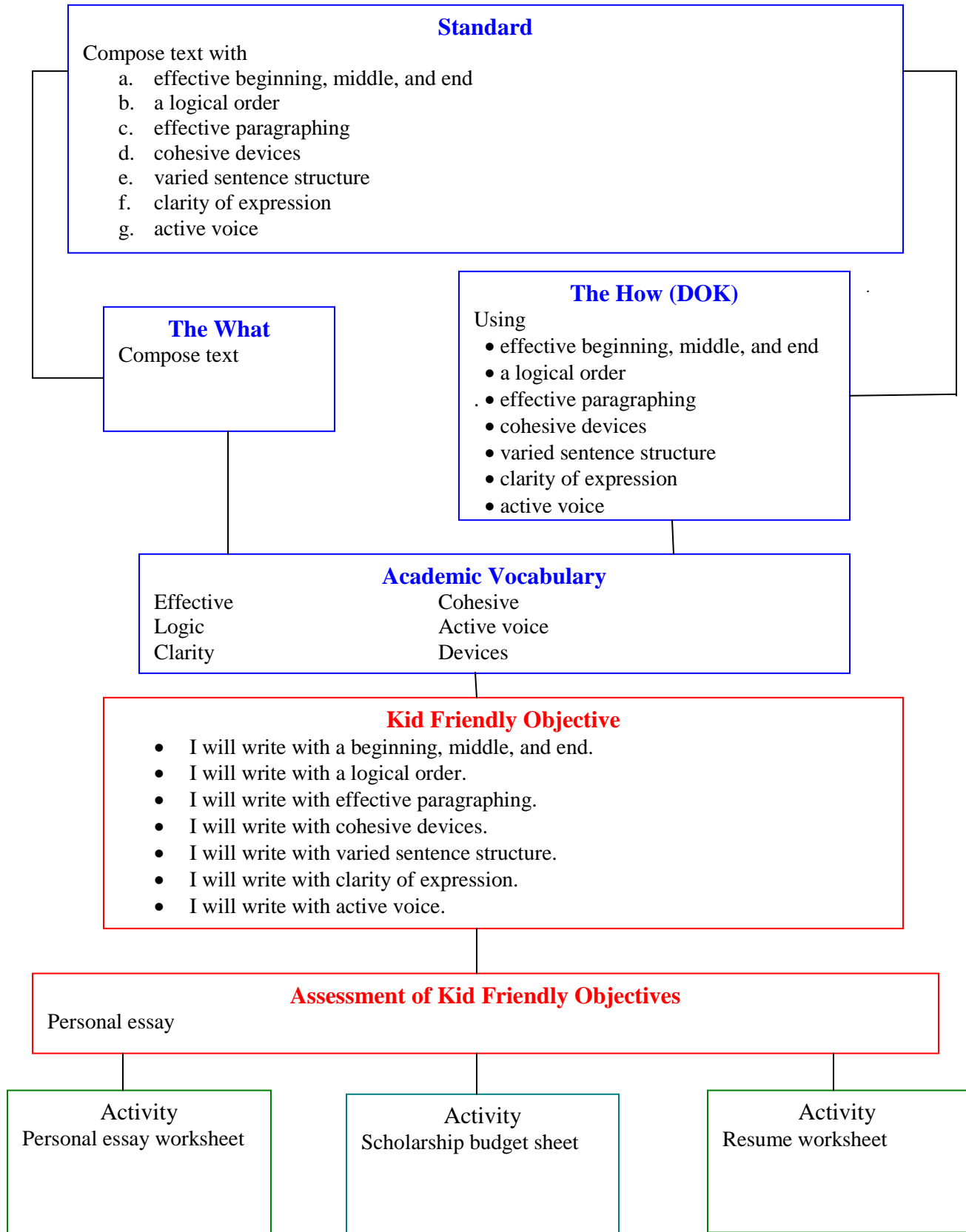


INSTRUCTIONAL DESIGN FRAMEWORK



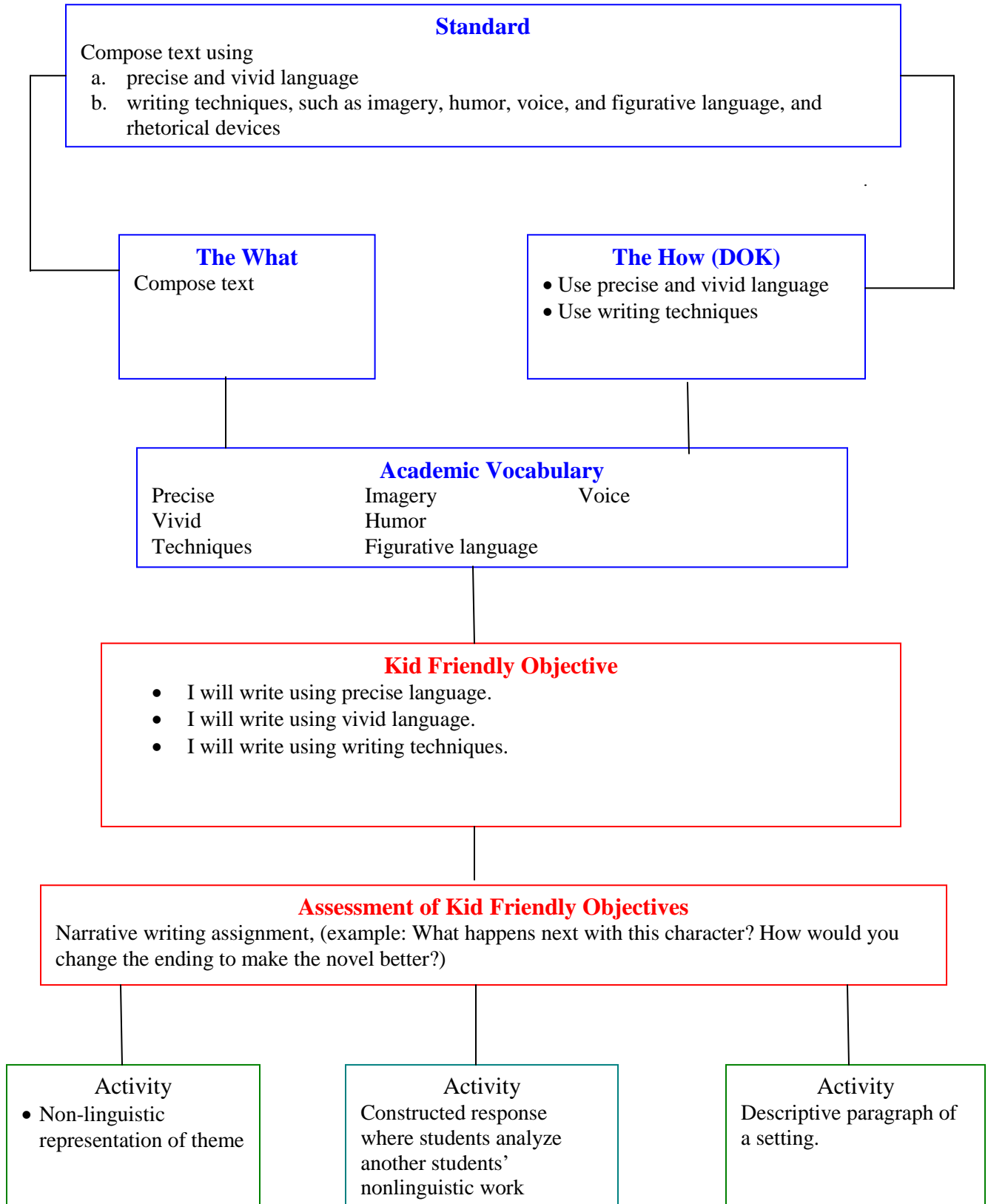
INSTRUCTIONAL DESIGN FRAMEWORK

W2C



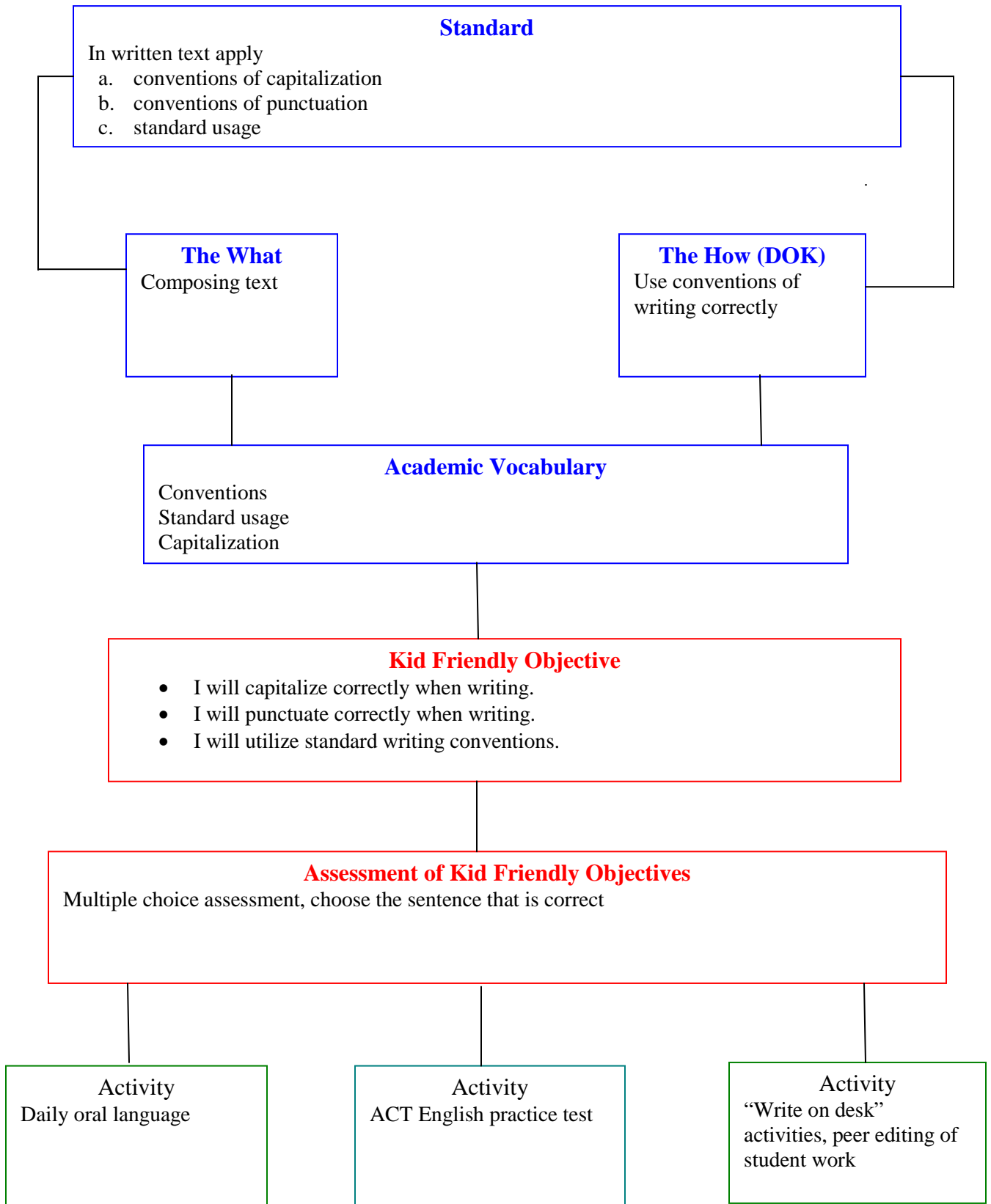
INSTRUCTIONAL DESIGN FRAMEWORK

W2D



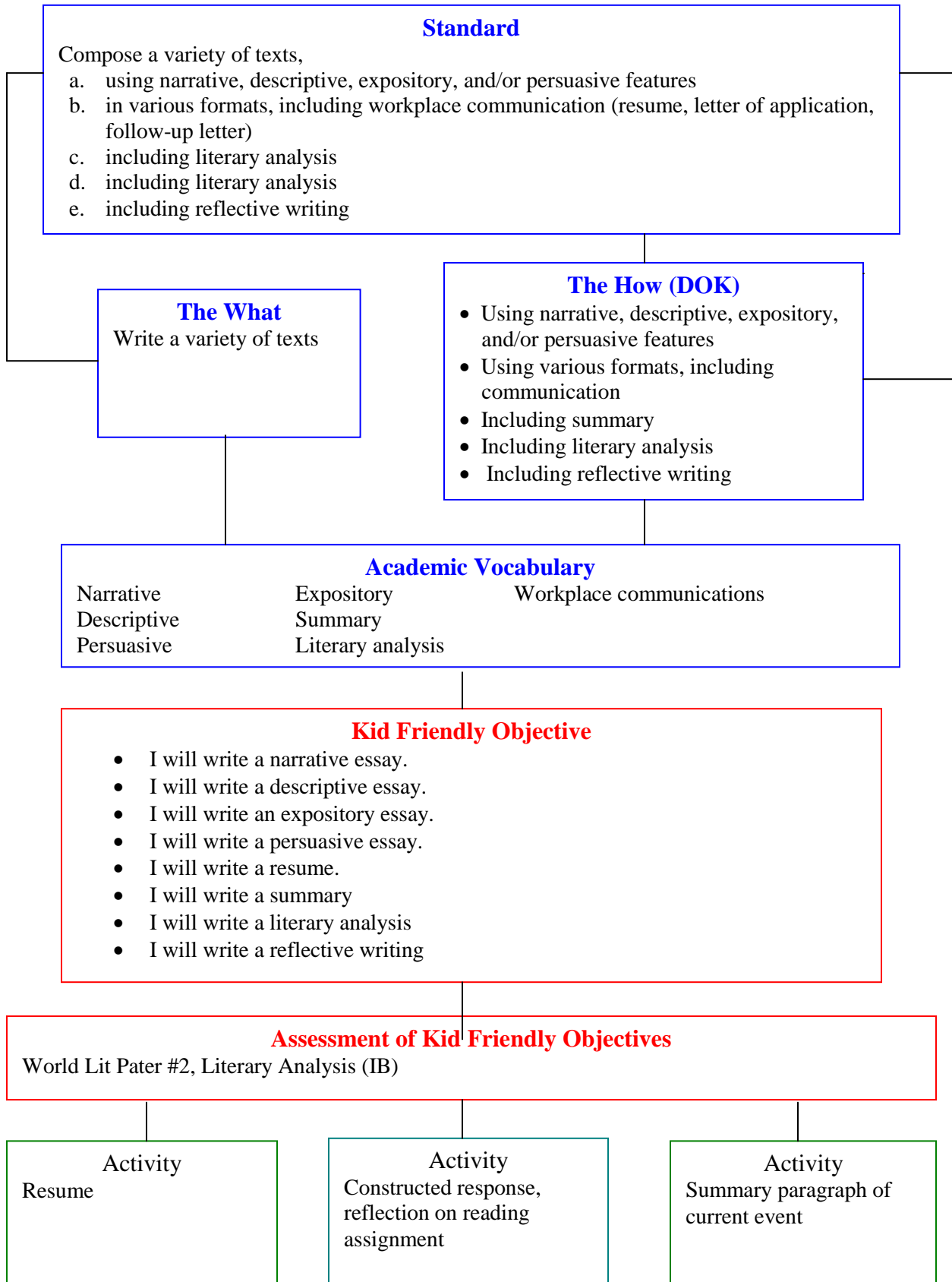
INSTRUCTIONAL DESIGN FRAMEWORK

W2E



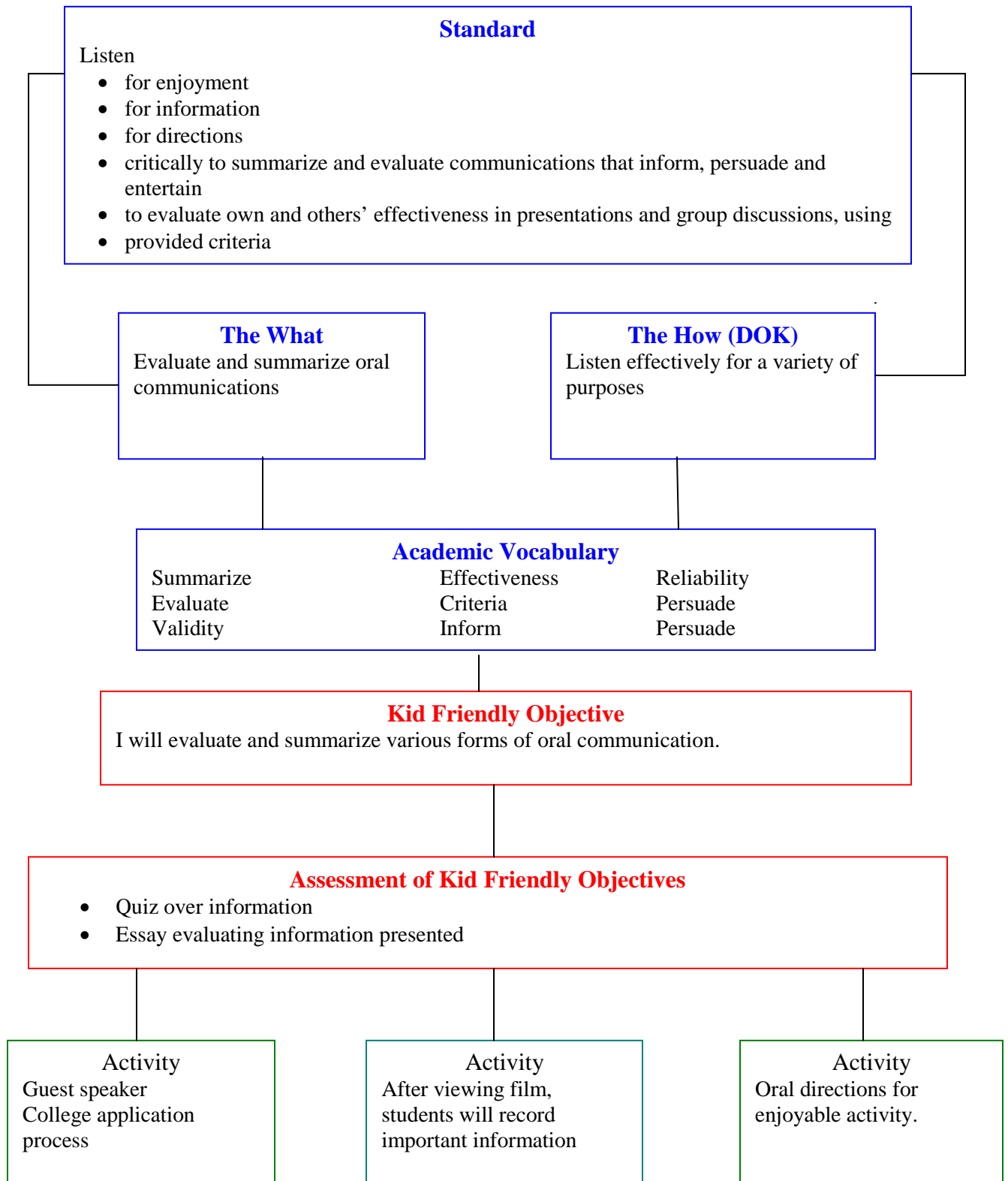
INSTRUCTIONAL DESIGN FRAMEWORK

W3A



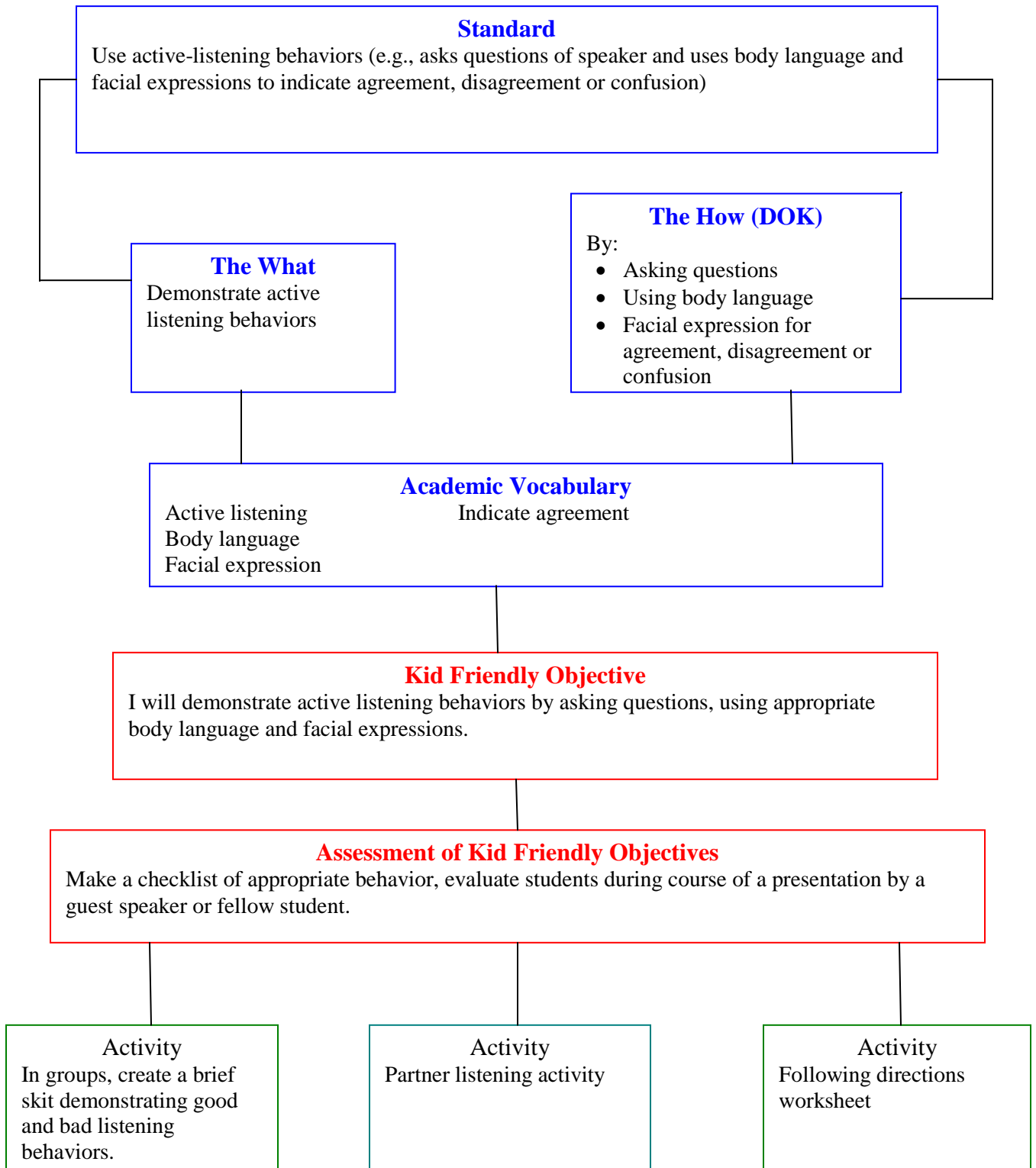
INSTRUCTIONAL DESIGN FRAMEWORK

L1A



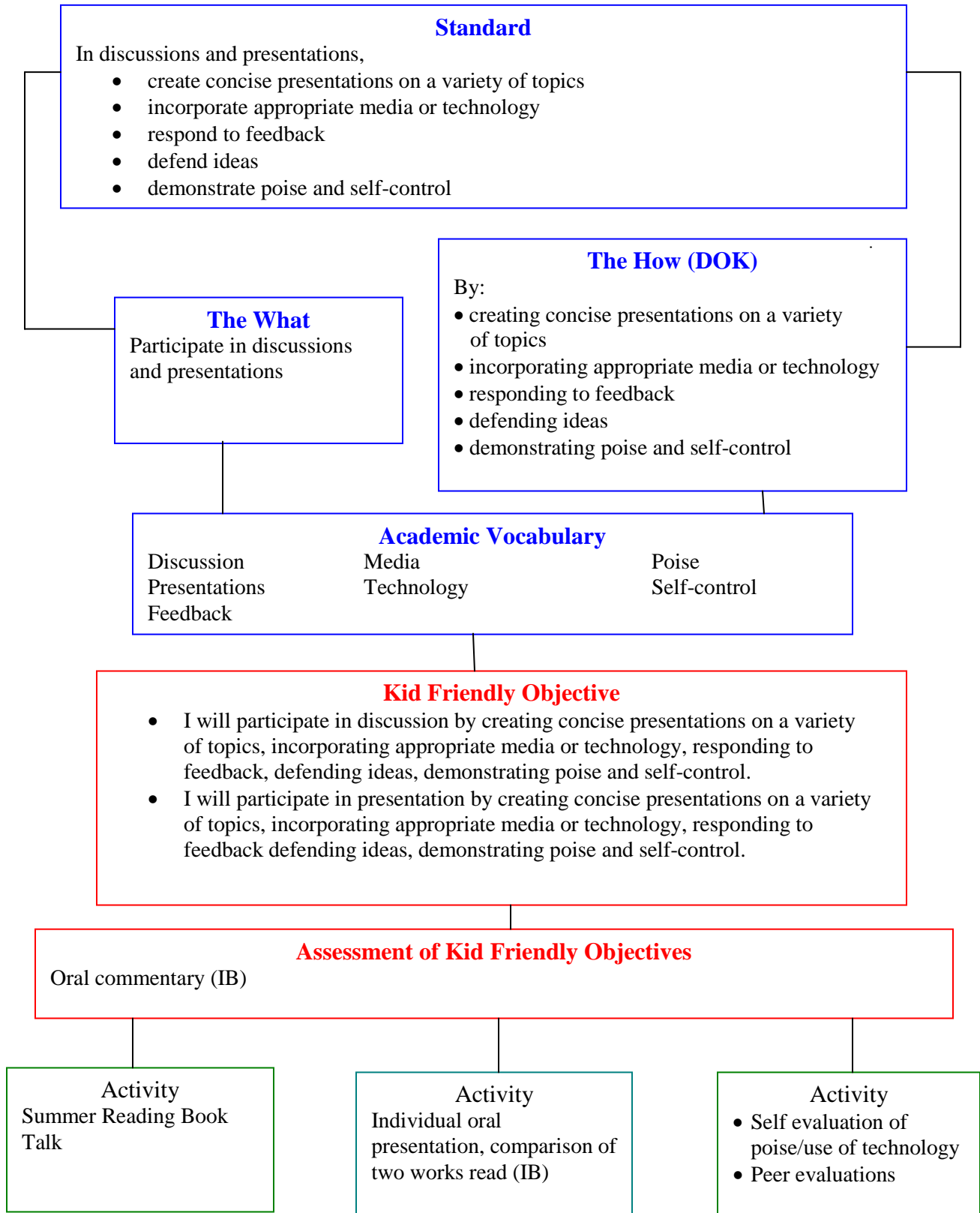
INSTRUCTIONAL DESIGN FRAMEWORK

L1B



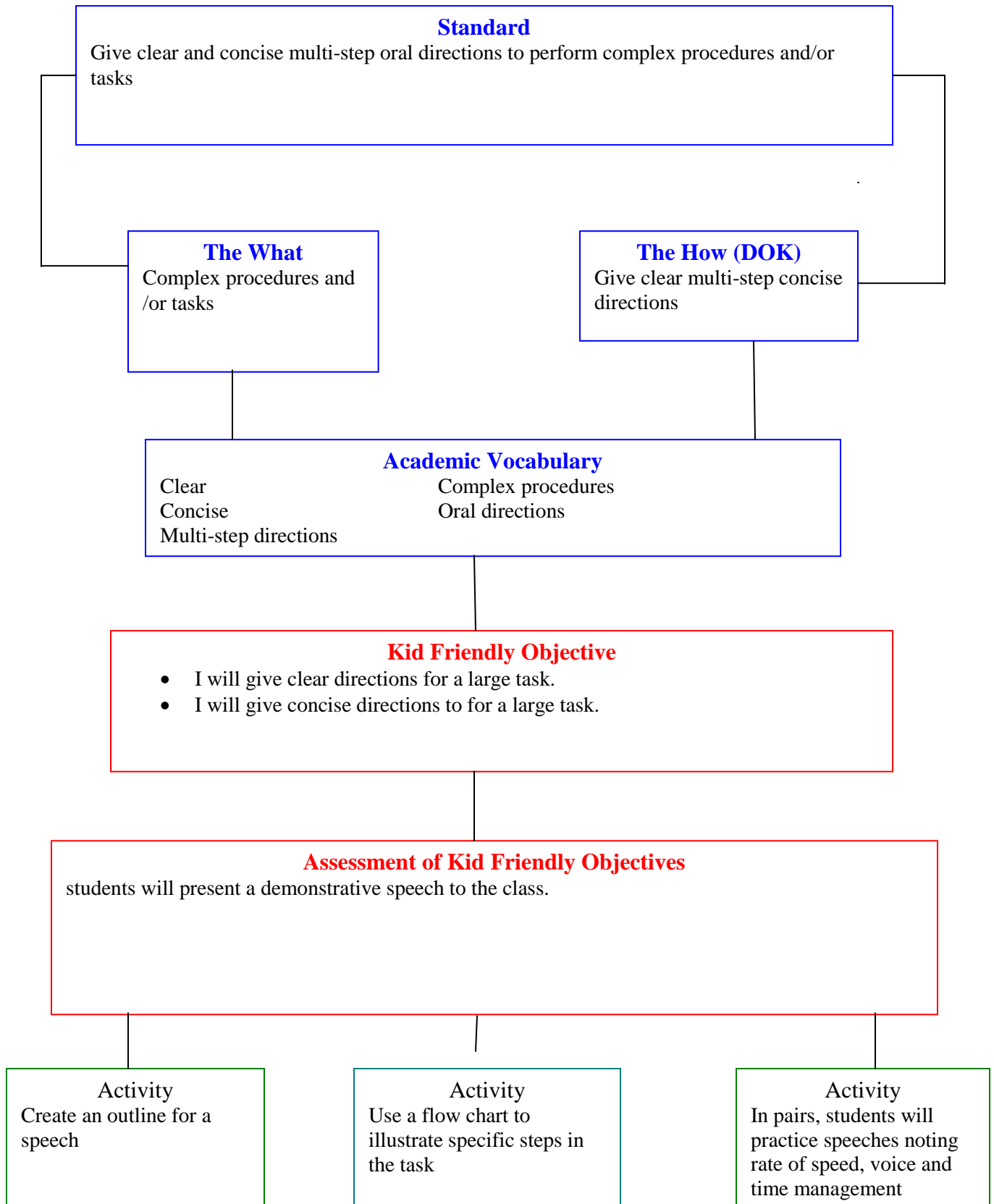
INSTRUCTIONAL DESIGN FRAMEWORK

L2A



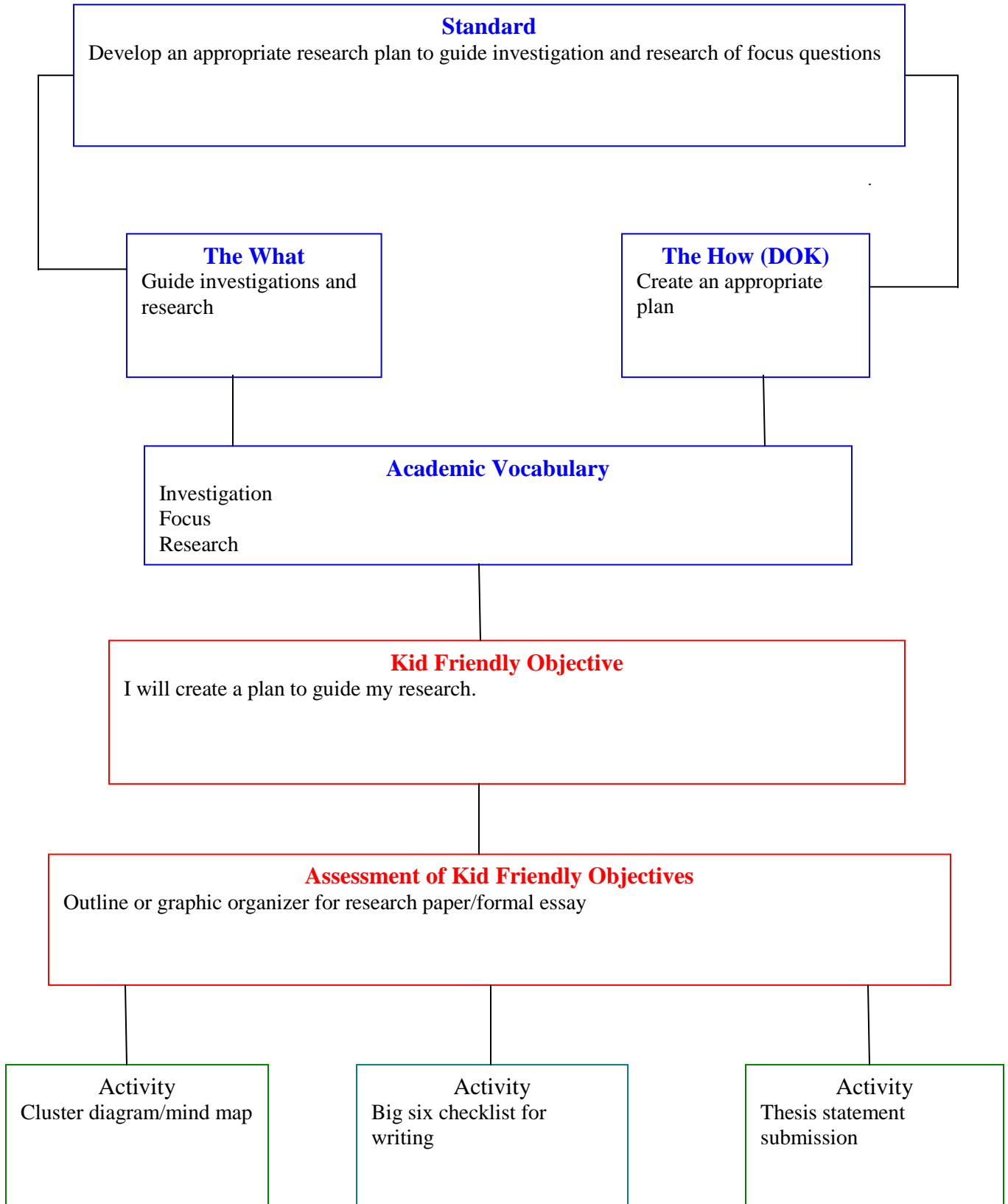
INSTRUCTIONAL DESIGN FRAMEWORK

L2B



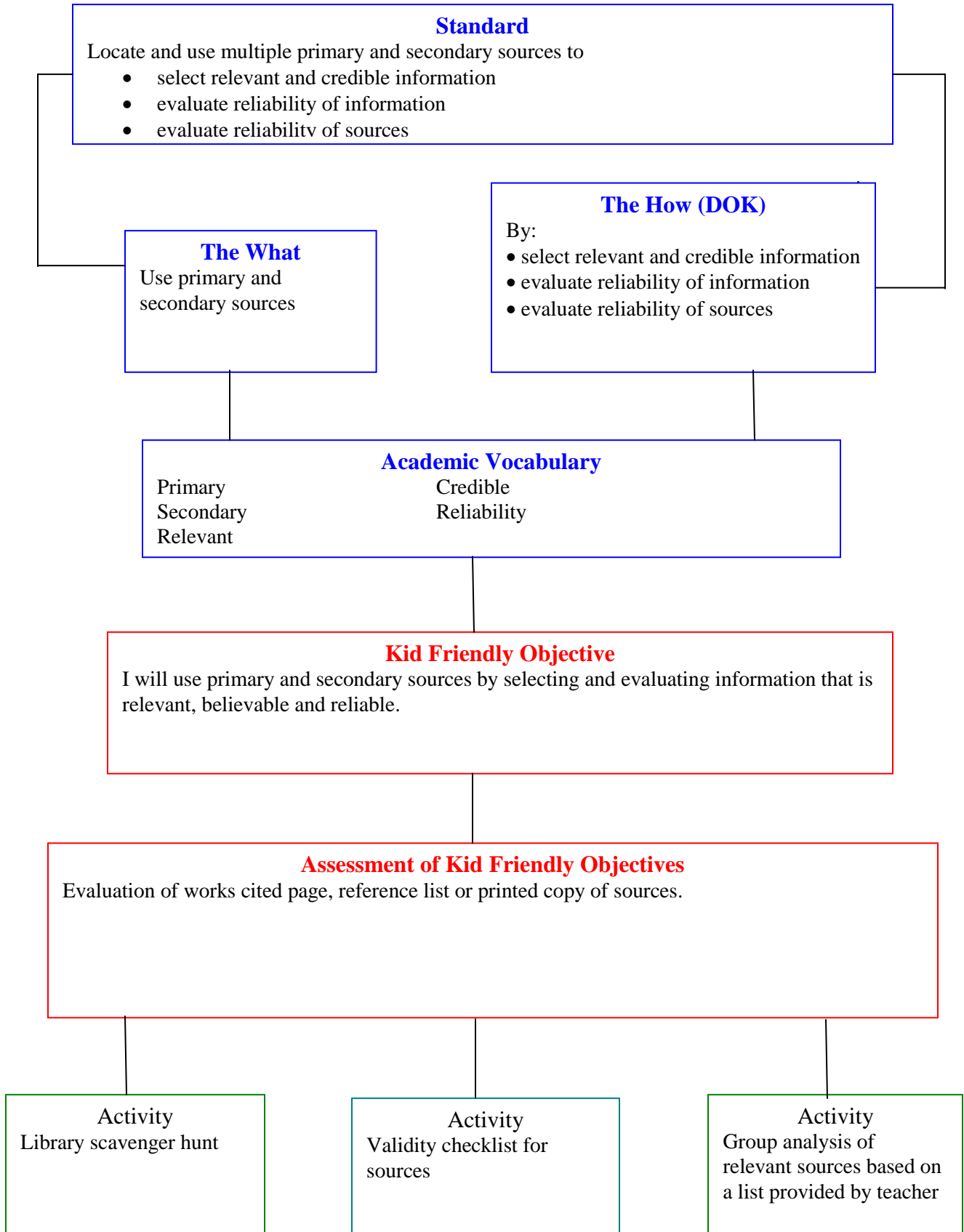
INSTRUCTIONAL DESIGN FRAMEWORK

IL1A



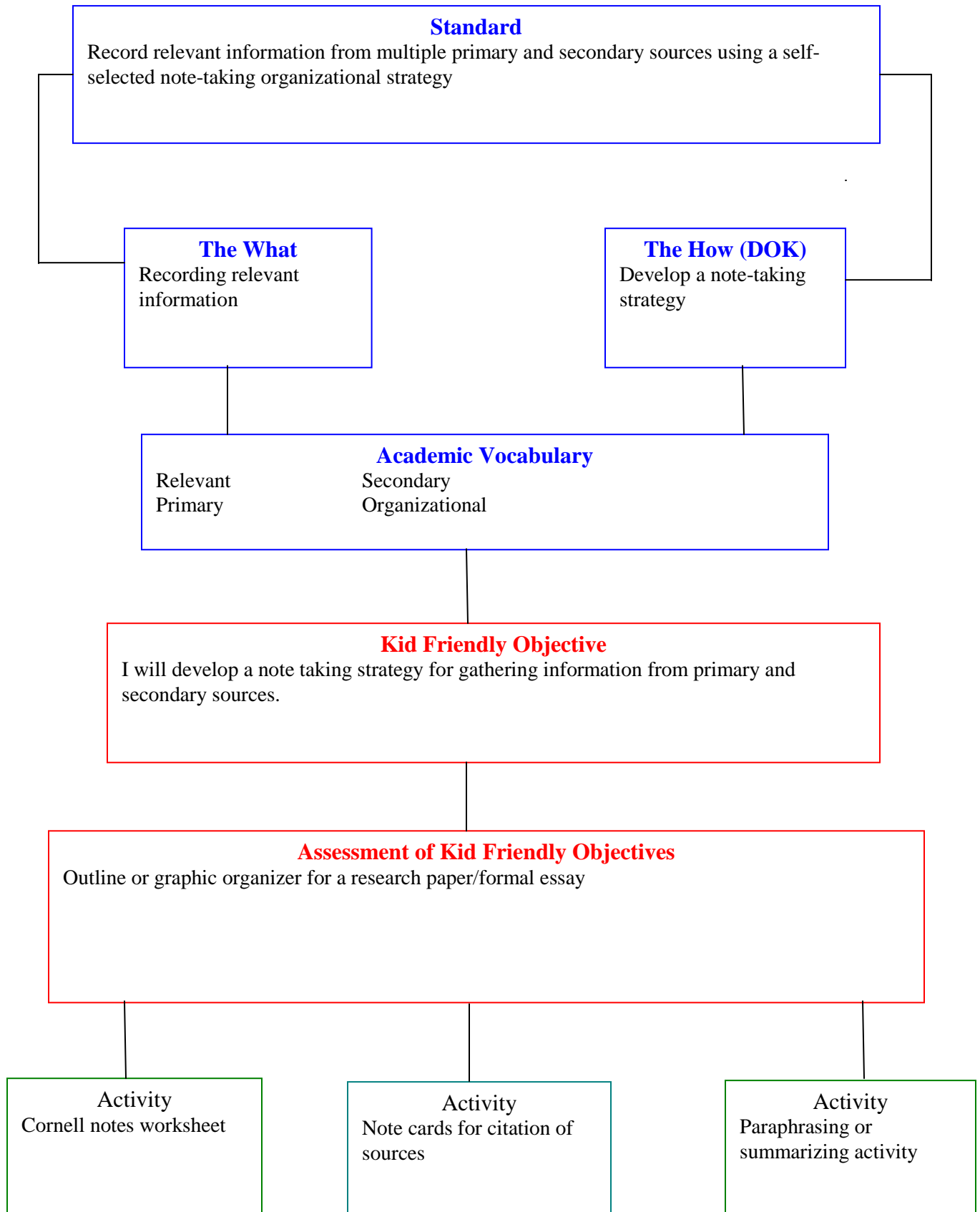
INSTRUCTIONAL DESIGN FRAMEWORK

IL1B



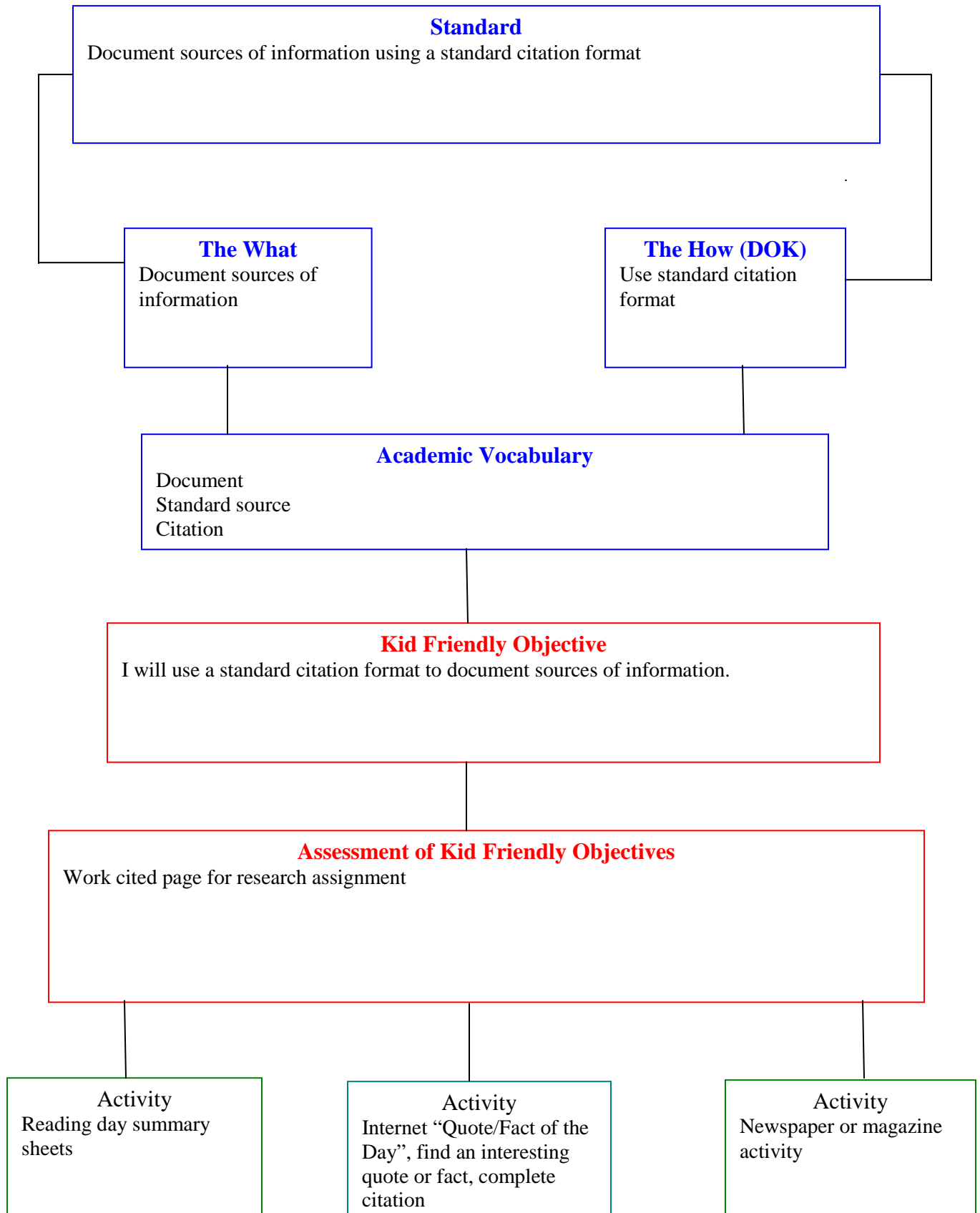
INSTRUCTIONAL DESIGN FRAMEWORK

IL1C



INSTRUCTIONAL DESIGN FRAMEWORK

IL1D



INSTRUCTIONAL DESIGN FRAMEWORK

IL2A

